

**3M** Science.  
Applied to Life.™

# 3M™ DI-NOC™ Architectural Finishes

## Color Samples

Fine Wood	Haku/Metal Leaf	Stone	Metallic Hairline	High Gloss
Metallic Wood	Mono Contrast	Concrete/Mortar	Metallic Texture	Single Color
Wood Grain	Leather	Sand	Metallic	Abrasion Resistant
Wood Grain Gloss	Stucco	Abstract	Carbon	Whiteboard
Silk	Ceramic/Slate	Effect	Entertainment	Exterior
Nuno/Textile	Aged Metal	Advanced Metallic	Fine Leather	

2016 – 2018



**3M™ DI-NOC™ Architectural Finishes**

## Explore the creativity.

With the addition of 153 new patterns that incorporate the latest trends, 3M™ DI-NOC™ Architectural Finishes are now available in more than 800\* different designs, enabling almost infinite creativity. Our diverse selection of unique new products utilizes the latest technologies available, including *Effect*, which changes color depending on the viewing angle, and *Advanced Metallic*, which gives the appearance of woven metal. In addition, a new range of patterns has been added to the portfolio enabling application to exterior surfaces. Our rich assortment of finishes offers the warmth of wood grain, the texture of traditional Japanese washi paper, abstract designs inspired by nature, and many other interior and exterior design possibilities. Experience greater design freedom with DI-NOC Architectural Finishes.

\*Includes related products



Custom Color

## Table of Contents

Fine Wood . . . . .	9	Effect . . . . .	34
Metallic Wood . . . . .	18	Advanced Metallic . . . . .	35
Wood Grain . . . . .	19	Metallic Hairline . . . . .	36
Wood Grain Gloss . . . . .	22	Metallic Texture . . . . .	37
Silk . . . . .	26	Metallic . . . . .	37
Nuno/Textile . . . . .	26	Carbon . . . . .	38
Haku/Metal Leaf . . . . .	28	Entertainment . . . . .	38
Mono Contrast . . . . .	29	Fine Leather . . . . .	39
Leather . . . . .	30	High Gloss . . . . .	39
Stucco . . . . .	31	Single Color . . . . .	40
Ceramic/Slate . . . . .	31	Abrasion Resistant . . . . .	42
Aged Metal . . . . .	31	Whiteboard . . . . .	43
Stone . . . . .	32	Exterior . . . . .	43
Concrete/Mortar . . . . .	32	Technical Information . . . . .	44
Sand . . . . .	33	Index . . . . .	48
Abstract . . . . .	33		



CH-1630 / VM-1488 ⓘ / VM-1489 ⓘ





LE-1105 / AR-1115 / HG-1205 ⓘ



AR Series Custom Color

Do more  
with your designs.



Custom Color / ME-379 ✨



WG-1141 ⓘ ✨ ⓘ / Custom Color



WG-1346 / WG-694 ✨





1



2



- |           |            |            |            |
|-----------|------------|------------|------------|
| 1 RT-1827 | 2 WG-1844  | 3 MW-1833  | 4 VM-1693  |
| 5 AM-1701 | 6 AM-1696  | 7 FW-1766  | 8 VM-1691  |
| 9 VM-1694 | 10 NU-1795 | 11 AE-1717 | 12 FW-1757 |

3



4



5



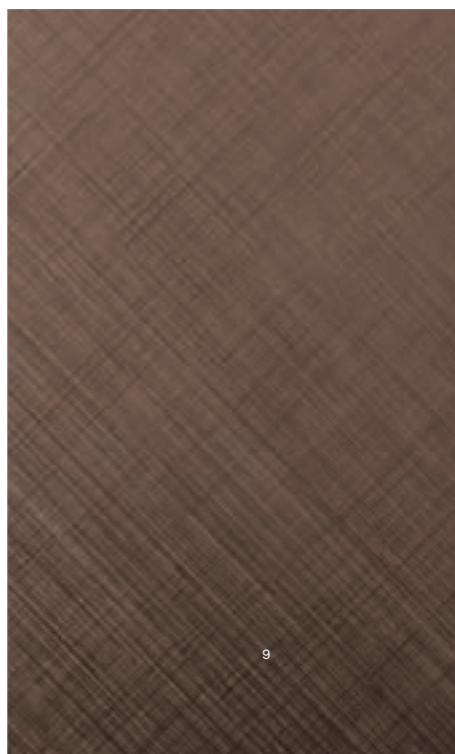
6



7



8



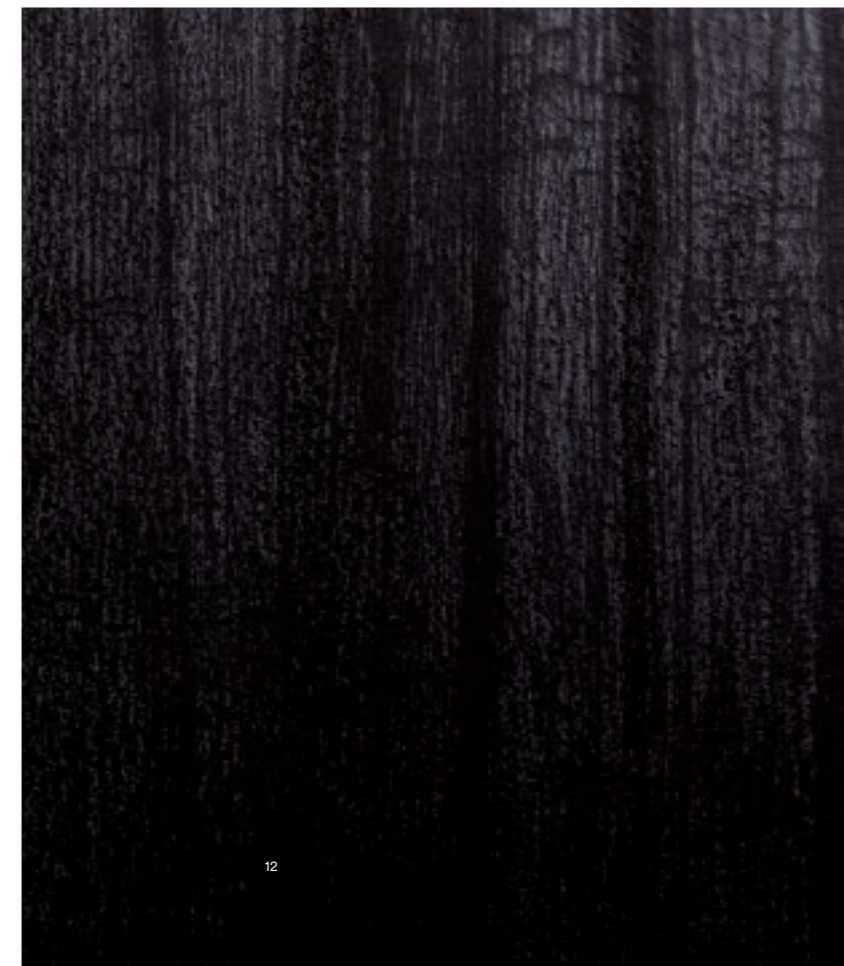
9



10



11



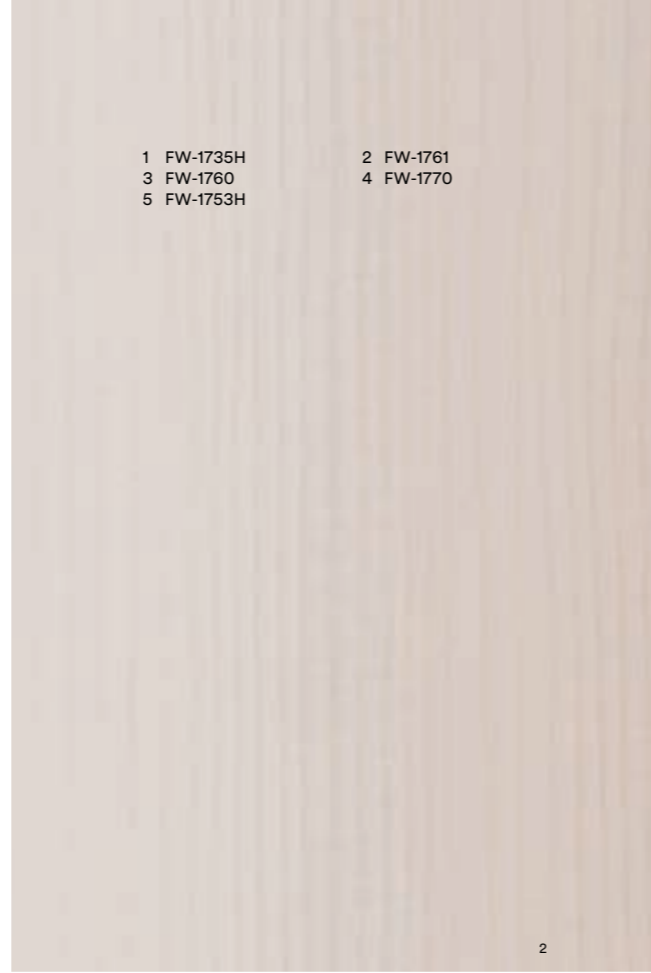
12



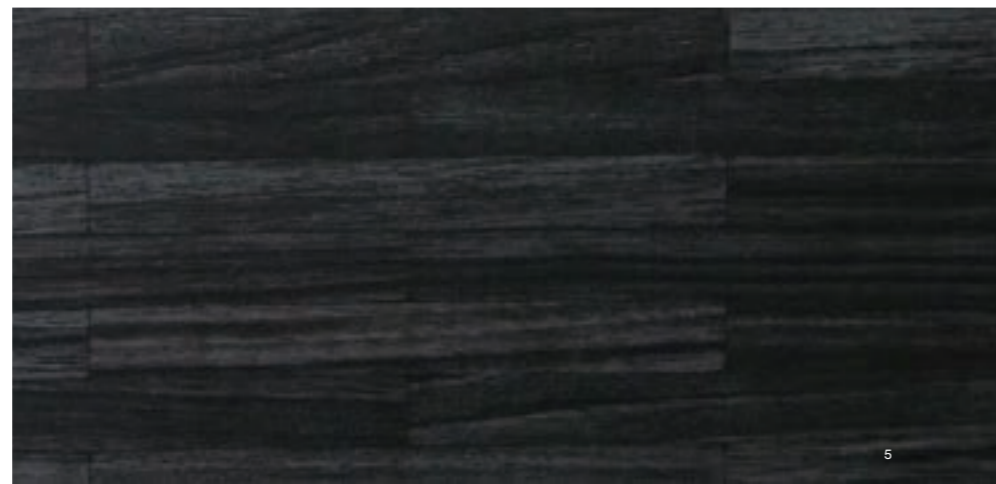
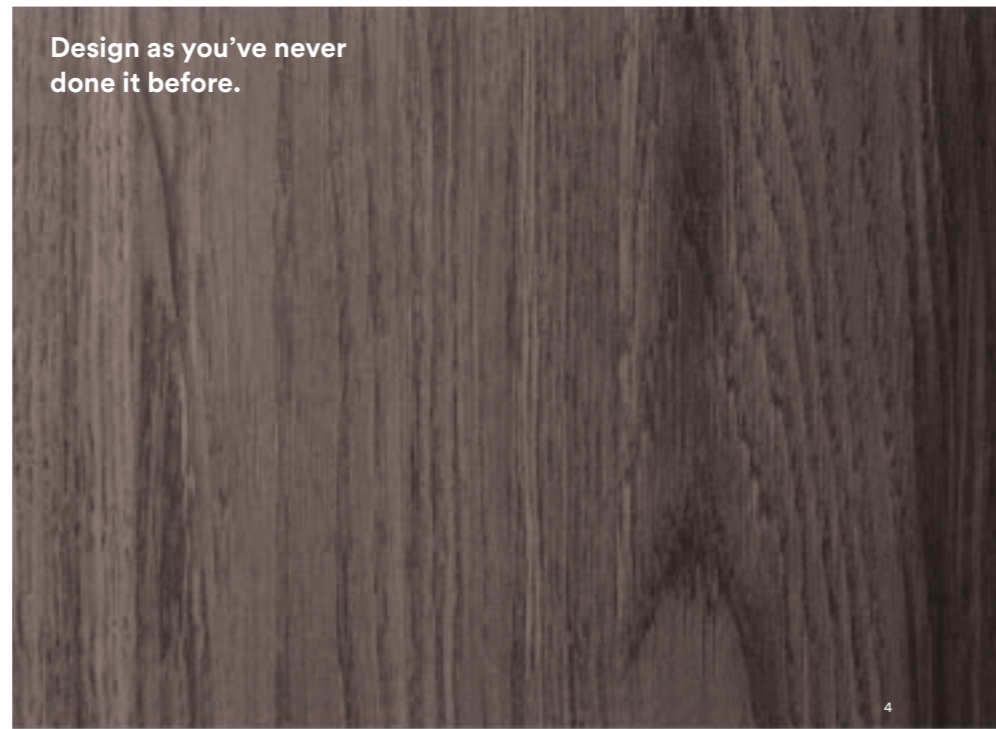
# Fine Wood



1 FW-1735H  
3 FW-1760  
5 FW-1753H



2 FW-1761  
4 FW-1770



- ✦ For interior applications requiring maximum resistance to fading from UV exposure
- ☀ For interior applications requiring maximum resistance to UV fading, not recommended for use on PVC-coated steel panels
- ⓘ Not recommended for use on compound curved surfaces
- Ⓜ Not recommended for butt joint applications

- NEW New design
- ⓔ Available in E-series
  - H A product number ending in "H" indicates horizontal grain direction
  - 📐 Pattern is large scale; view full pattern width image at [3M.com/AMD](http://3M.com/AMD)
  - 👁 Available in EX Series. See page 43 for visual appearance.



FW-1761 NEW FW-1758 NEW FW-1765 NEW



FW-1138 ✦ ⓔ FW-1139H ✦ ⓔ FW-788 FW-7017



FW-7001 ⓔ FW-1209 FW-1208



FW-1271 ⓔ FW-1811 FW-1268 FW-336 ⓔ



FW-1210 FW-1255 ⓔ FW-1261 ⓔ



FW-1207 FW-1742 NEW FW-1274 ⓔ FW-1217 ⓔ

A  
B  
C  
D  
E  
F  
G



# Fine Wood

A



FW-1745 NEW



FW-1682 NEW



FW-789

B



FW-1211 E



C



FW-1747 NEW



FW-1291 E

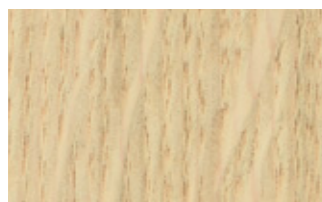


FW-1258



FW-1766 NEW

D



FW-1129 E, H, W



FW-1130H W, E



FW-1289 E



FW-1750 NEW

E



FW-1256 E



FW-1681 NEW E



FW-1748 NEW

F



FW-1293 E



FW-1279



FW-1214 E, W



FW-1285

G



FW-1262 E



FW-1269 E



FW-1810



FW-1272 E

- ☀ For interior applications requiring maximum resistance to fading from UV exposure
- ☀ For interior applications requiring maximum resistance to UV fading, not recommended for use on PVC-coated steel panels
- ⚠ Not recommended for use on compound curved surfaces
- W Not recommended for butt joint applications

- NEW New design
- E Available in E-series
- H A product number ending in "H" indicates horizontal grain direction
- E Pattern is large scale; view full pattern width image at 3M.com/AMD
- E Available in EX Series. See page 43 for visual appearance.

# Fine Wood

A



FW-1754 NEW



FW-1767 NEW E

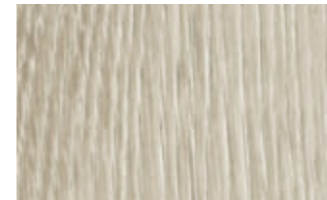


FW-1307 E, H



FW-1302 E, H

B



FW-1304 E, H



FW-1266 E



FW-1756 NEW



FW-1287

C



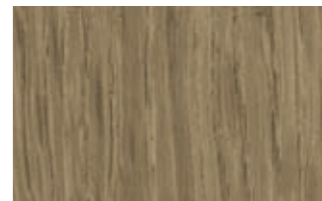
FW-1213 E



FW-1266 E



FW-1300 E, H



FW-1294 E

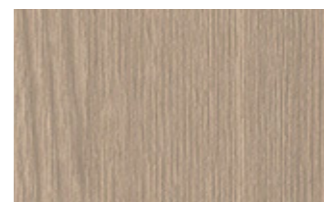
D



FW-1292



FW-1259



FW-337 W, E



E



FW-1215



FW-1218 E, H



FW-1294 E

F

G



# Fine Wood

A



FW-1265



FW-1212



FW-616



FW-236

B



FW-1122



FW-1023



FW-1771H NEW

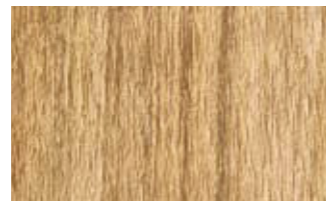


FW-1286

C



FW-1755 NEW



FW-1296



FW-1734H NEW

D



FW-1257



FW-791

E



FW-1306



FW-1805

F



FW-7011



FW-1735H NEW

G



FW-608H

# Fine Wood

A



FW-327



FW-1283



FW-1280



FW-1743 NEW

B



FW-234



FW-1123



FW-608H



FW-1743 NEW

C



FW-1737 NEW



FW-231



FW-795



FW-1331

D



FW-1737 NEW



FW-501



FW-237



FW-612

E



FW-1125



FW-1276



FW-1738 NEW



FW-888

F



FW-502



FW-1281



FW-1738 NEW



FW-655

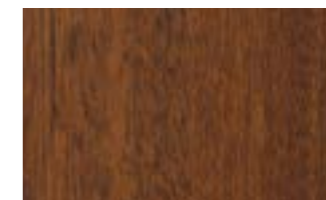
G



FW-1278



FW-233



FW-1739 NEW



FW-889

- For interior applications requiring maximum resistance to fading from UV exposure
- For interior applications requiring maximum resistance to UV fading, not recommended for use on PVC-coated steel panels
- Not recommended for use on compound curved surfaces
- Not recommended for butt joint applications

- NEW New design
- Available in E-series
- H A product number ending in "H" indicates horizontal grain direction
- Pattern is large scale; view full pattern width image at 3M.com/AMD
- Available in EX Series. See page 43 for visual appearance.



# Fine Wood

A



FW-1744 NEW

B

C

D

E

F

G



FW-1763 NEW



FW-1297



FW-613



FW-1022



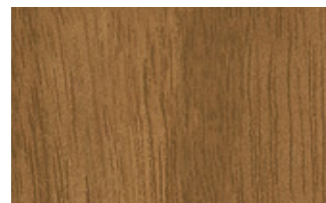
FW-1121H



FW-1021



FW-1760 NEW



FW-7008



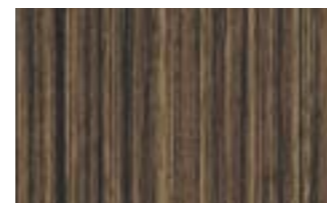
FW-1769 NEW



FW-1764 NEW



FW-656



FW-521



FW-1273



FW-1749 NEW



FW-1277

- ☀ For interior applications requiring maximum resistance to fading from UV exposure
- ☀ For interior applications requiring maximum resistance to UV fading, not recommended for use on PVC-coated steel panels
- ⚠ Not recommended for use on compound curved surfaces
- ⚠ Not recommended for butt joint applications

- NEW New design
- Ⓜ Available in E-series
- H A product number ending in "H" indicates horizontal grain direction
- 📷 Pattern is large scale; view full pattern width image at 3M.com/AMD
- ☁ Available in EX Series. See page 43 for visual appearance.



FW-1768 NEW



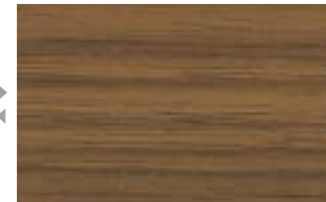
FW-1744 NEW



FW-1113



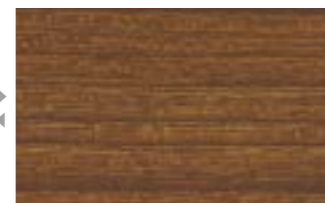
FW-650



FW-609H



FW-1124



FW-1039H



FW-677



FW-332



FW-886



FW-614



FW-510



FW-1801



FW-240



FW-1270



FW-1137



FW-1040H



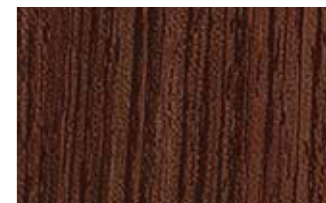
FW-232



FW-619



FW-7016



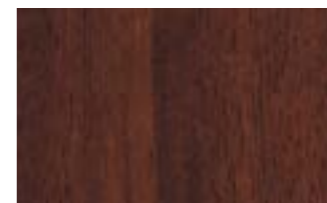
FW-649



FW-7006



FW-1020



FW-887



FW-7013

# Fine Wood

A

B

C

D

E

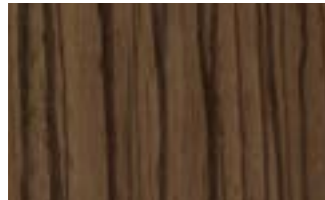
F

G



# Fine Wood

A



FW-1134 \*



FW-606H \*

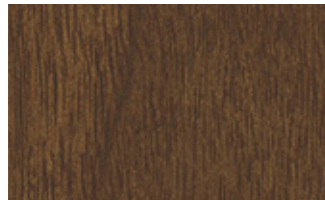


FW-625 \*



FW-7015 \*

B



FW-651 \*



FW-1282



FW-648 \*

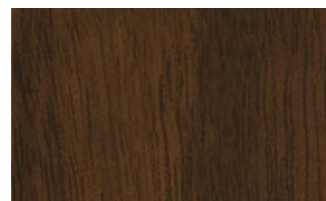


FW-1037 \*

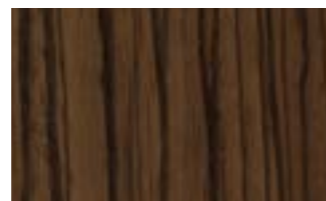
C



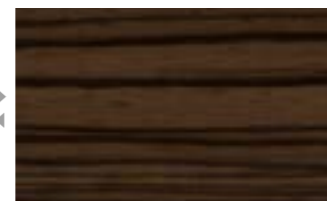
FW-338 \*



FW-7009 \*



FW-1133 \*



FW-607H \*

D



FW-653 \*



FW-643 \*



FW-7014 \*



FW-330 \*

E



FW-1135 \*



FW-1136H \*



FW-1752H

F



FW-1746



FW-334 \*

G



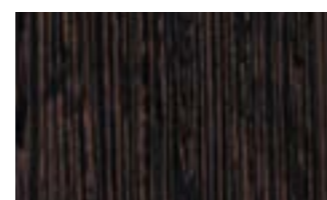
FW-1126 \*



FW-627 \*



FW-1288



FW-618 \*

- For interior applications requiring maximum resistance to fading from UV exposure
- For interior applications requiring maximum resistance to UV fading, not recommended for use on PVC-coated steel panels
- Not recommended for use on compound curved surfaces
- Not recommended for butt joint applications

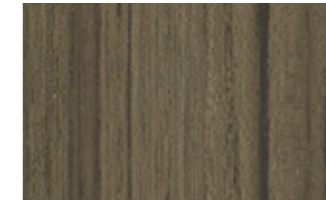
- NEW** New design
- Available in E-series
- H** A product number ending in "H" indicates horizontal grain direction
- Pattern is large scale; view full pattern width image at [3M.com/AMD](http://3M.com/AMD)
- Available in EX Series. See page 43 for visual appearance.



FW-1736H **NEW**



FW-1216



FW-7007 \*



FW-1290



FW-1736H **NEW**



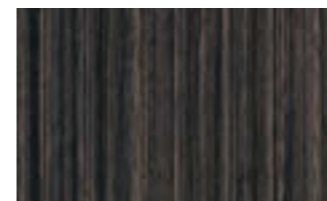
FW-1275



FW-640 \*



FW-324 \*



FW-522 \*



FW-1741 **NEW**



FW-1301



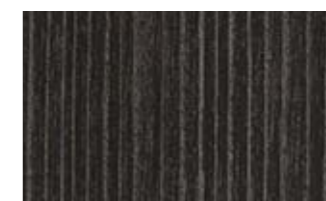
FW-1762 **NEW**



FW-1759 **NEW**



FW-1127 \*



FW-641 \*



FW-1036 \*



FW-1751 **NEW**



FW-1753H **NEW**



FW-1757 **NEW**



FW-1740 **NEW**

# Fine Wood

A

B

C

D

E

F

G



# Metallic Wood

A



MW-1833 NEW

B



MW-1832 NEW



MW-1834 NEW



MW-1418

C



MW-1416



MW-1242



MW-1243



MW-1244

D



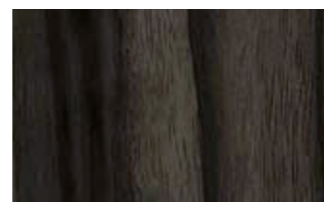
MW-1783 NEW



MW-1177



MW-1419



MW-1421

E



MW-776



MW-777



MW-1420

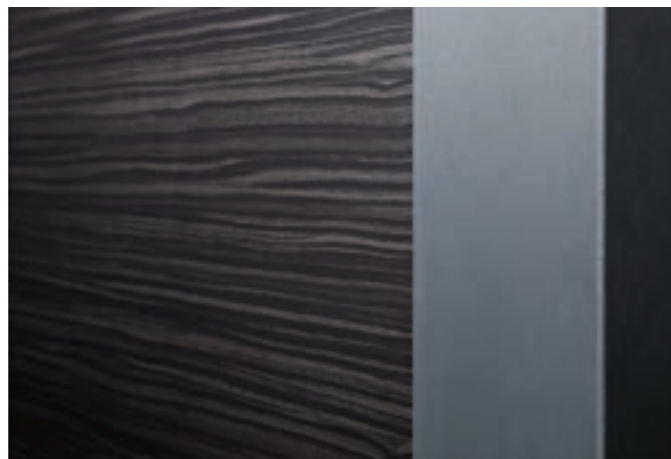
F



MW-1782 NEW



MW-1417



MW-777

G

# Wood Grain

- ☀ For interior applications requiring maximum resistance to fading from UV exposure
- ☀ For interior applications requiring maximum resistance to UV fading, not recommended for use on PVC-coated steel panels
- ⚠ Not recommended for use on compound curved surfaces
- W Not recommended for butt joint applications

- NEW New design
- E Available in E-series
  - H A product number ending in "H" indicates horizontal grain direction
  - 📷 Pattern is large scale; view full pattern width image at 3M.com/AMD
  - ☁ Available in EX Series. See page 43 for visual appearance.

A



WG-657



WG-1365



WG-1071



WG-1067



WG-1847 NEW

B



WG-247



WG-1846 NEW



WG-1069 E



WG-1339



WG-1377

C



WG-1839 NEW



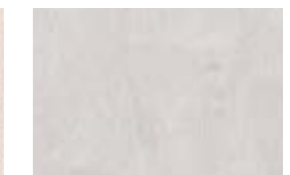
WG-1220



WG-1366



WG-1046 E



WG-659

D



WG-1378



WG-960



WG-1345



WG-467



WG-1843 NEW

E



WG-660



WG-964



WG-1144



WG-166 W



WG-662 E

F



WG-1355



WG-1385



WG-2705



WG-1392H



WG-696 E

G



WG-1357



WG-2860



WG-947 E



WG-1342

H



WG-1710 NEW



WG-1703 NEW



WG-1353



WG-1336 E



WG-1354

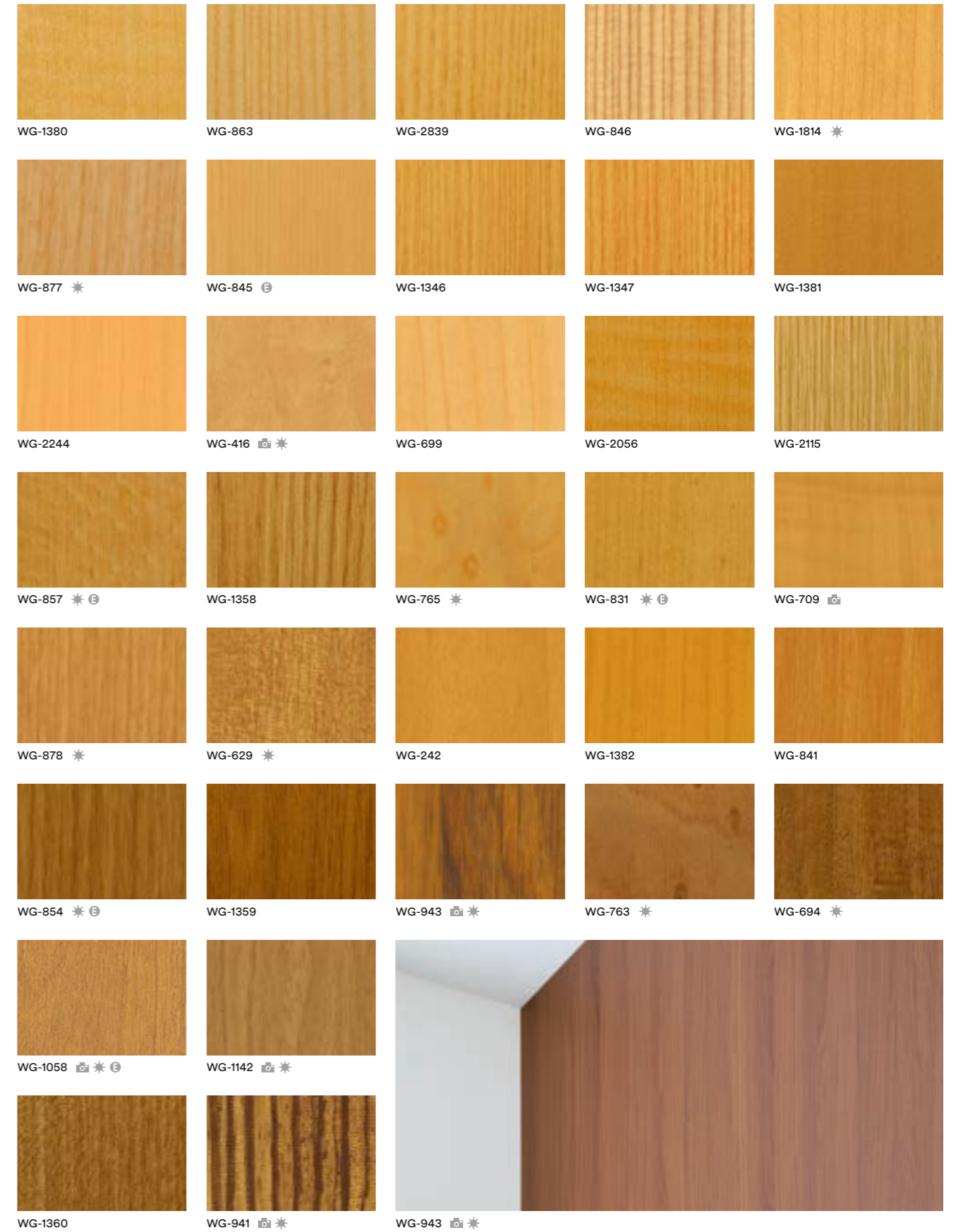
# Wood Grain



- ✱ For interior applications requiring maximum resistance to fading from UV exposure
- Ⓜ For interior applications requiring maximum resistance to UV fading, not recommended for use on PVC-coated steel panels
- ⓘ Not recommended for use on compound curved surfaces
- W Not recommended for butt joint applications

- NEW New design
- Ⓜ Available in E-series
  - H A product number ending in "H" indicates horizontal grain direction
  - 📷 Pattern is large scale; view full pattern width image at 3M.com/AMD
  - 👁 Available in EX Series. See page 43 for visual appearance.

# Wood Grain

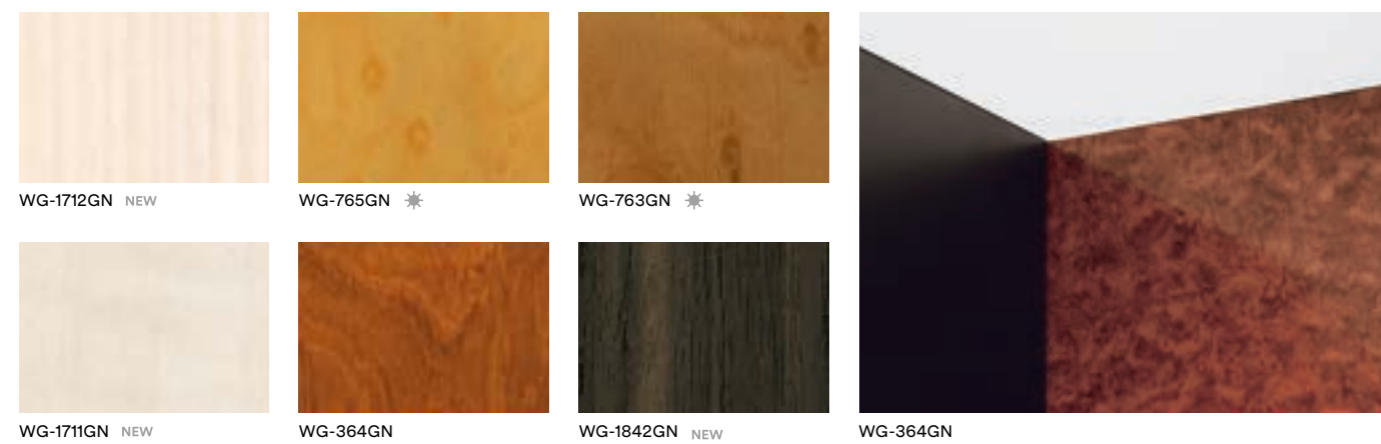




# Wood Grain



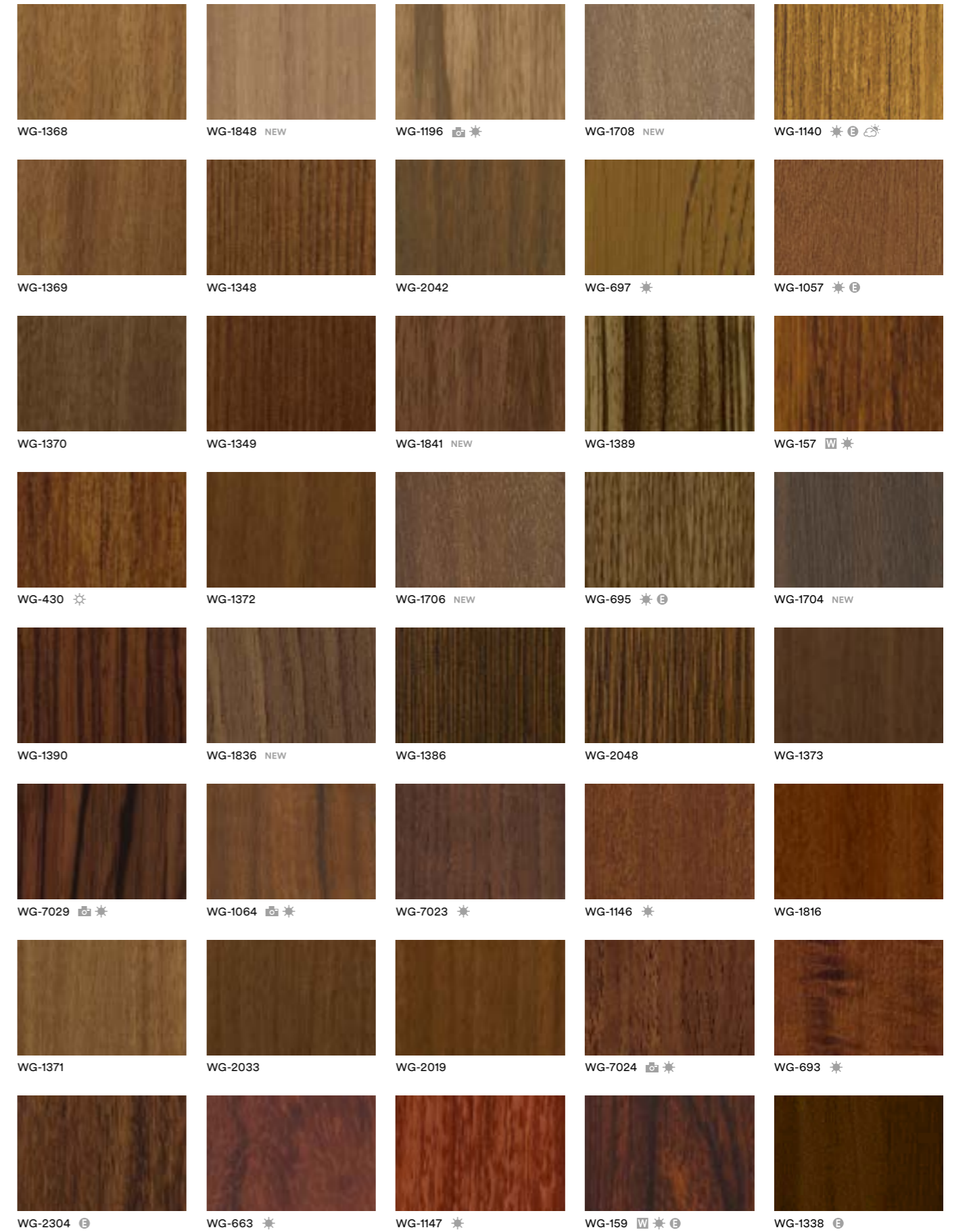
# Wood Grain Gloss



- ✨ For interior applications requiring maximum resistance to fading from UV exposure
- ☀ For interior applications requiring maximum resistance to UV fading, not recommended for use on PVC-coated steel panels
- ⓘ Not recommended for use on compound curved surfaces
- Ⓜ Not recommended for butt joint applications

- NEW New design
- ⓔ Available in E-series
  - H A product number ending in "H" indicates horizontal grain direction
  - 📷 Pattern is large scale; view full pattern width image at 3M.com/AMD
  - ☁ Available in EX Series. See page 43 for visual appearance.

# Wood Grain





# Wood Grain

- ☀ For interior applications requiring maximum resistance to fading from UV exposure
- ☀ For interior applications requiring maximum resistance to UV fading, not recommended for use on PVC-coated steel panels
- ⓘ Not recommended for use on compound curved surfaces
- W Not recommended for butt joint applications

- NEW New design
- E Available in E-series
- H A product number ending in "H" indicates horizontal grain direction
- 📷 Pattern is large scale; view full pattern width image at 3M.com/AMD
- 👁 Available in EX Series. See page 43 for visual appearance.

A



WG-1350



WG-1818 ☀



WG-1364



WG-156 W ☀



WG-664 ☀ E

B



WG-1374



WG-1044 📷 ☀ E



WG-1066 ☀



WG-408 ☀



WG-1063 ☀

C



WG-1376 E



WG-1387



WG-1391



WG-1351



WG-1052 ☀ E

D



WG-1070 📷 ☀



WG-1835 NEW



WG-1388



WG-2707



WG-2047

E



WG-2041



WG-1050 ☀



WG-428 ☀

F

G

H



1



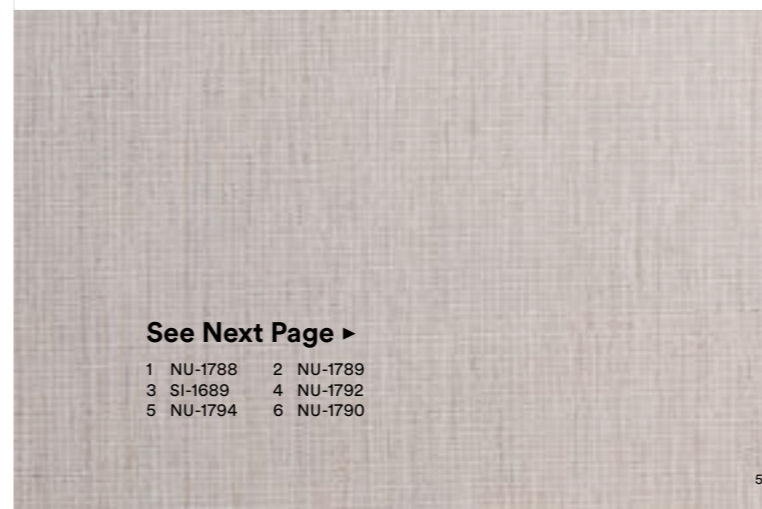
2



3



4



5



6

See Next Page ▶

- 1 NU-1788    2 NU-1789
- 3 SI-1689    4 NU-1792
- 5 NU-1794    6 NU-1790



# Silk



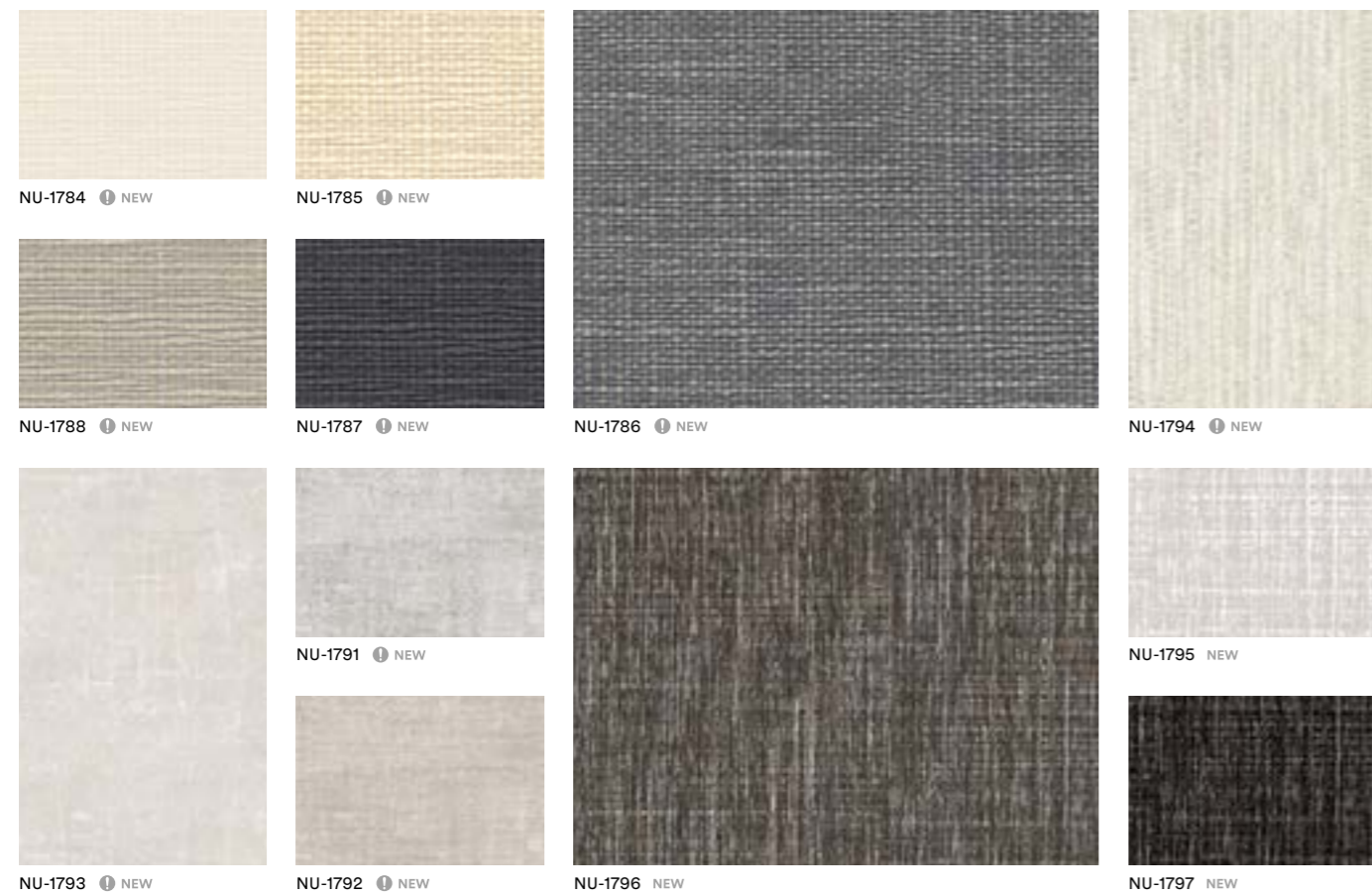
- ☀ For interior applications requiring maximum resistance to fading from UV exposure
- ☀ For interior applications requiring maximum resistance to UV fading, not recommended for use on PVC-coated steel panels
- ⓘ Not recommended for use on compound curved surfaces
- Ⓜ Not recommended for butt joint applications

- NEW New design
- ⓔ Available in E-series
  - H A product number ending in "H" indicates horizontal grain direction
  - 📷 Pattern is large scale; view full pattern width image at 3M.com/AMD
  - ☁ Available in EX Series. See page 43 for visual appearance.

# Nuno / Textile

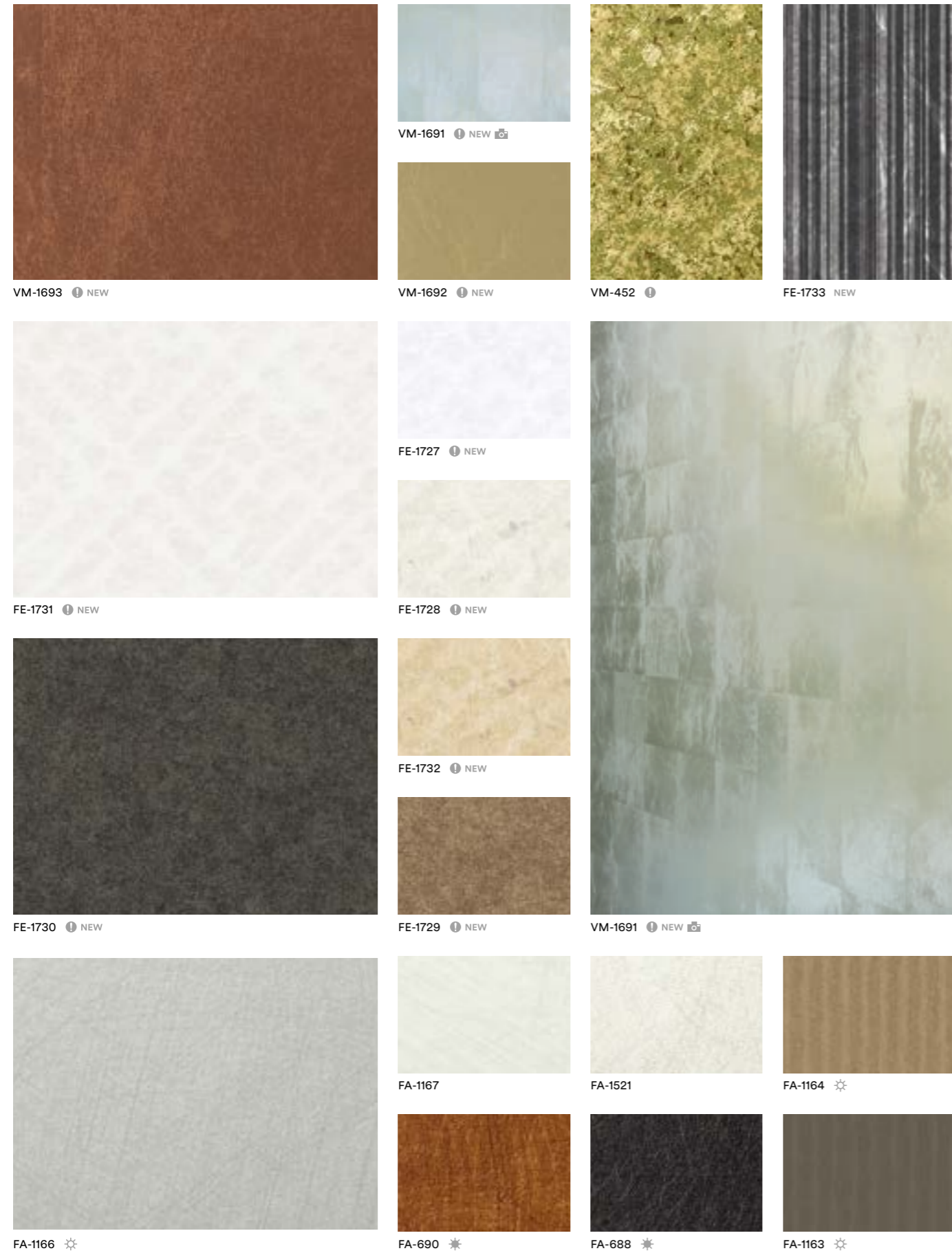


# Nuno / Textile



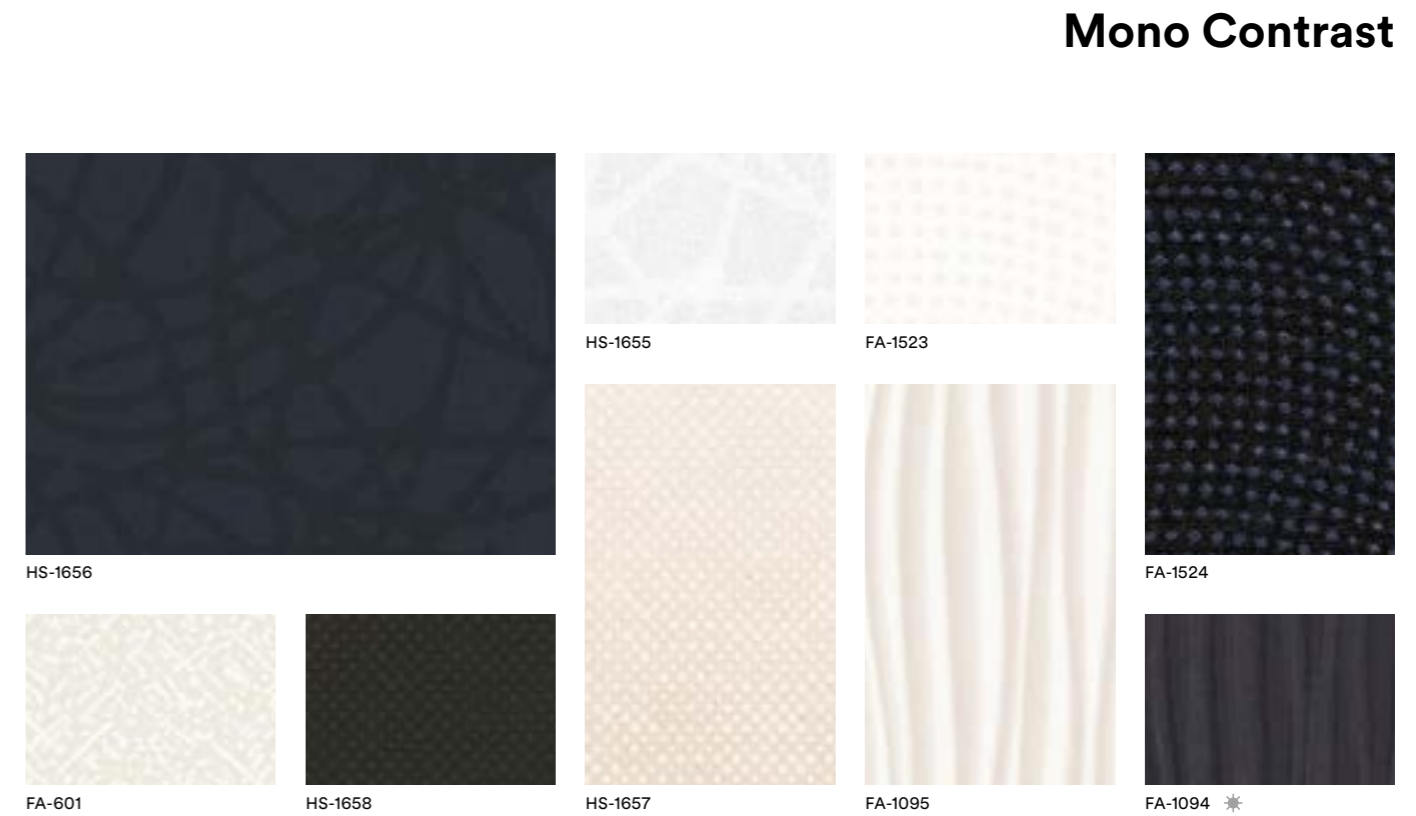
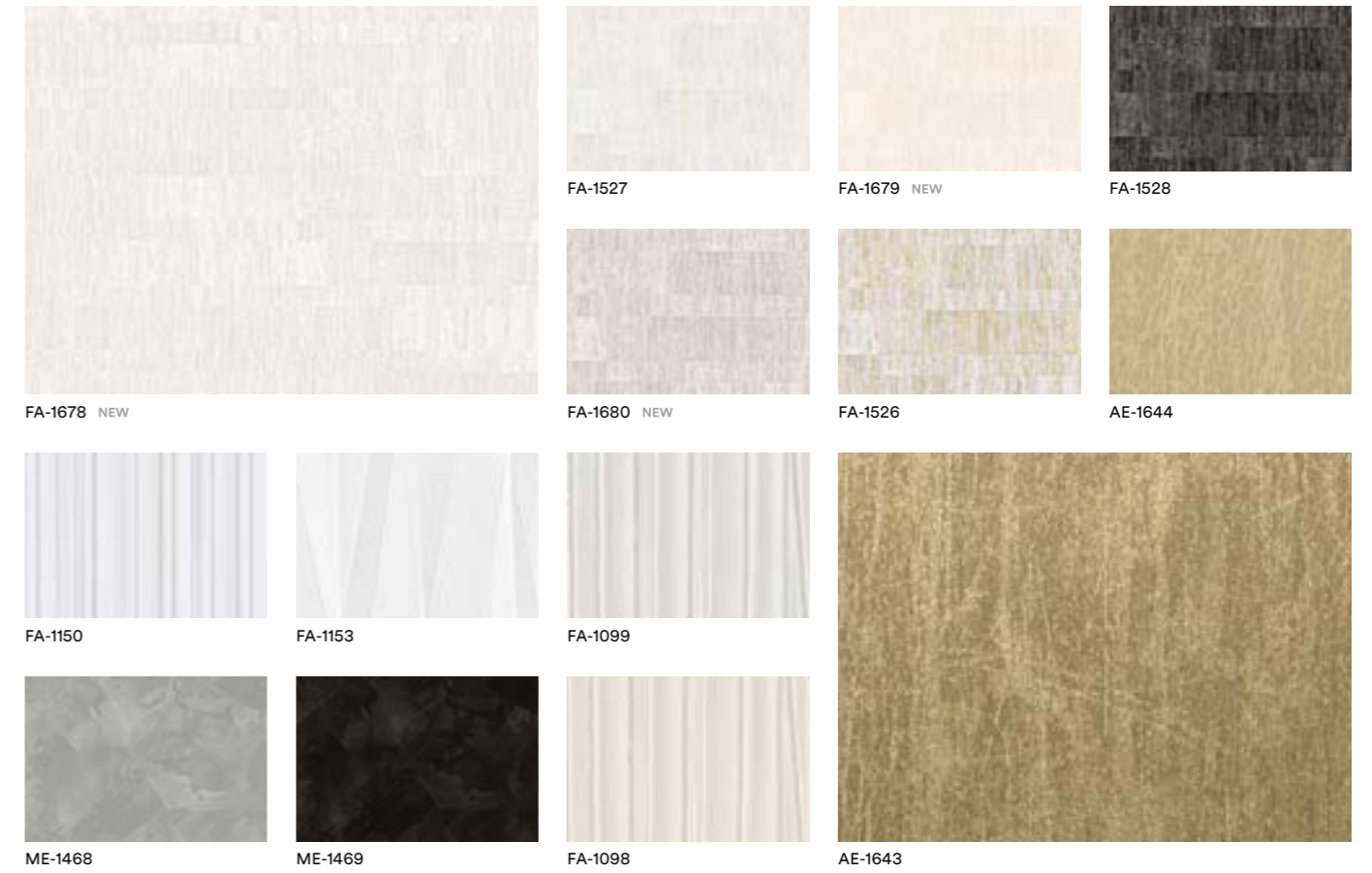


# Haku / Metal Leaf



- ✨ For interior applications requiring maximum resistance to fading from UV exposure
- ☀ For interior applications requiring maximum resistance to UV fading, not recommended for use on PVC-coated steel panels
- ⓘ Not recommended for use on compound curved surfaces
- ⚠ Not recommended for butt joint applications

- NEW New design
- ⓔ Available in E-series
  - ⓗ A product number ending in "H" indicates horizontal grain direction
  - 📷 Pattern is large scale; view full pattern width image at 3M.com/AMD
  - 👁 Available in EX Series. See page 43 for visual appearance.



# Haku / Metal Leaf

# Mono Contrast



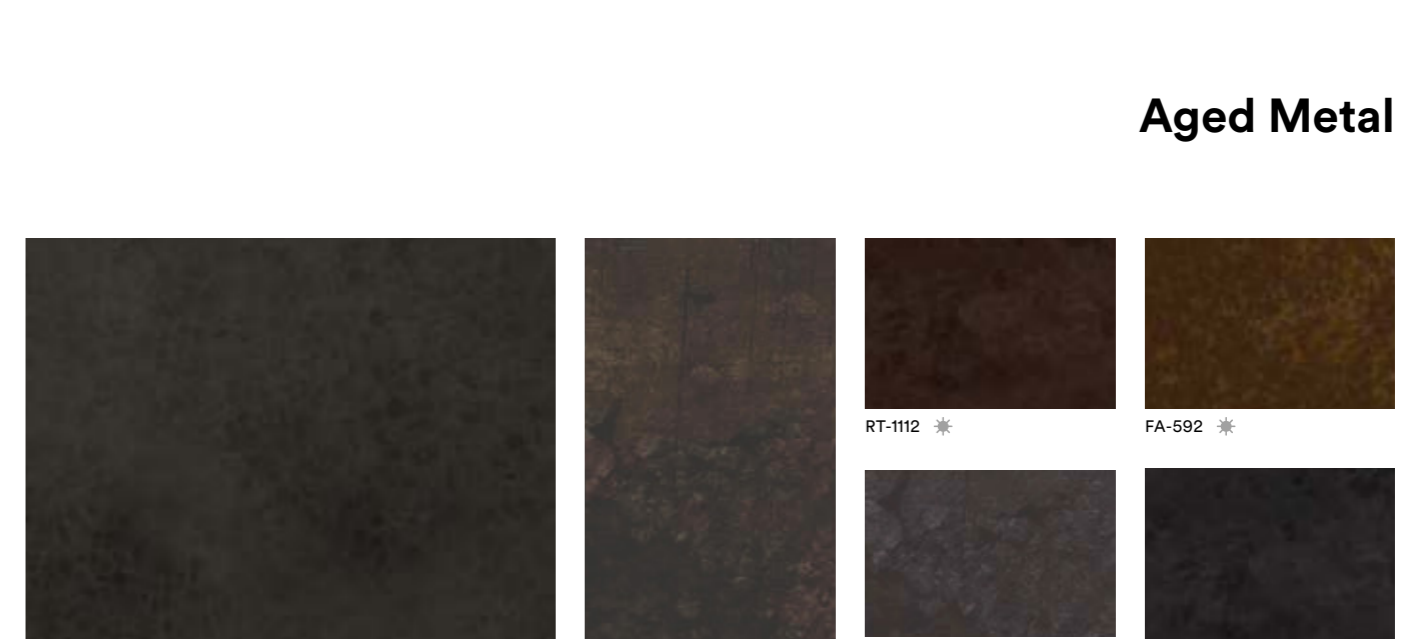
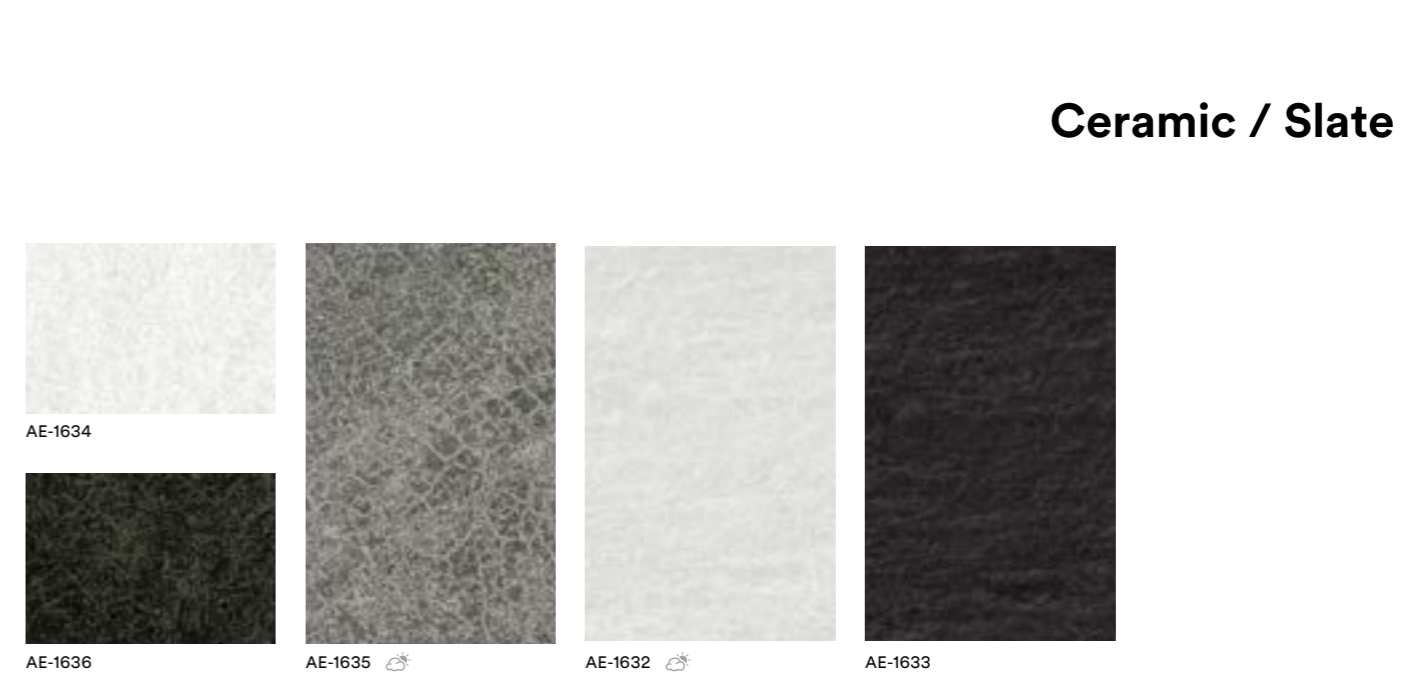
# Leather



LE-1551

- ★ For interior applications requiring maximum resistance to fading from UV exposure
- ☀ For interior applications requiring maximum resistance to UV fading, not recommended for use on PVC-coated steel panels
- ⓘ Not recommended for use on compound curved surfaces
- Ⓜ Not recommended for butt joint applications

- NEW New design
- ⓔ Available in E-series
- H A product number ending in "H" indicates horizontal grain direction
- 📷 Pattern is large scale; view full pattern width image at 3M.com/AMD
- ☁ Available in EX Series. See page 43 for visual appearance.



RT-1827 NEW 📷 FA-1530 📷 RT-1112 ★ FA-592 ★ FA-1531 RT-1111 ★

# Stucco

# Ceramic / Slate

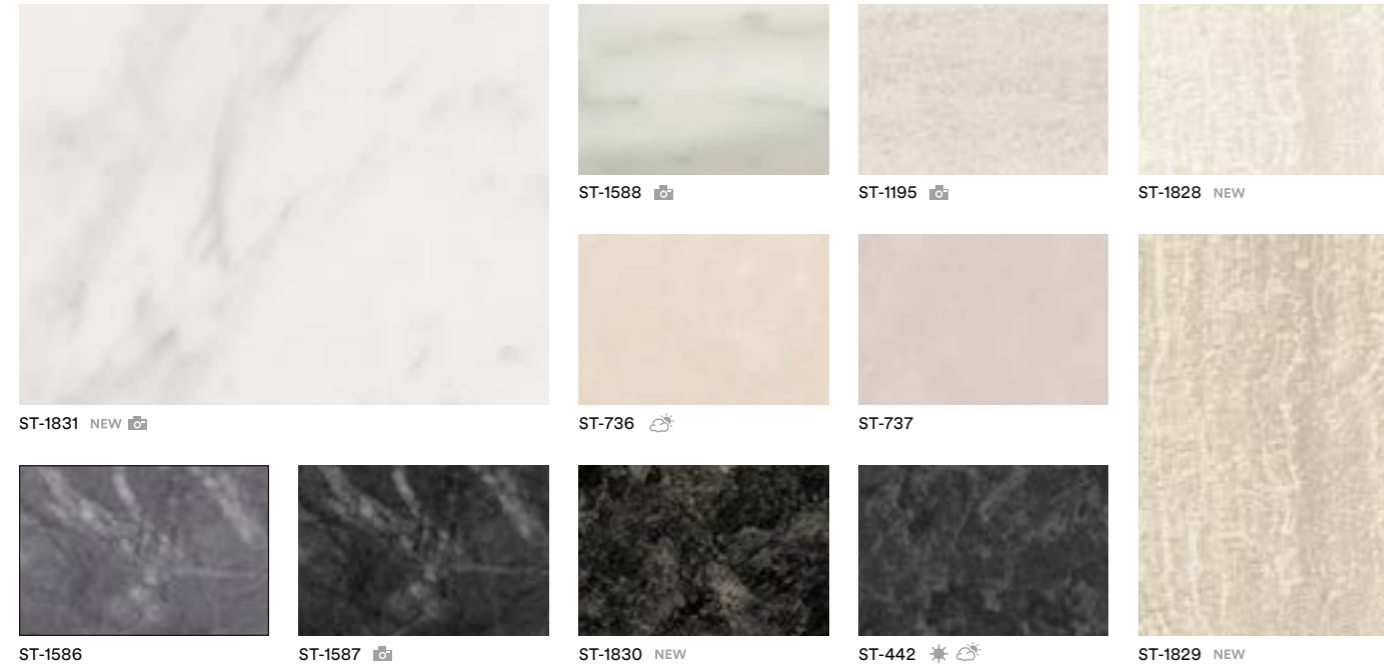
# Aged Metal

Leather / Stucco  
Ceramic / Aged Metal

Leather / Stucco  
Ceramic / Aged Metal



# Stone



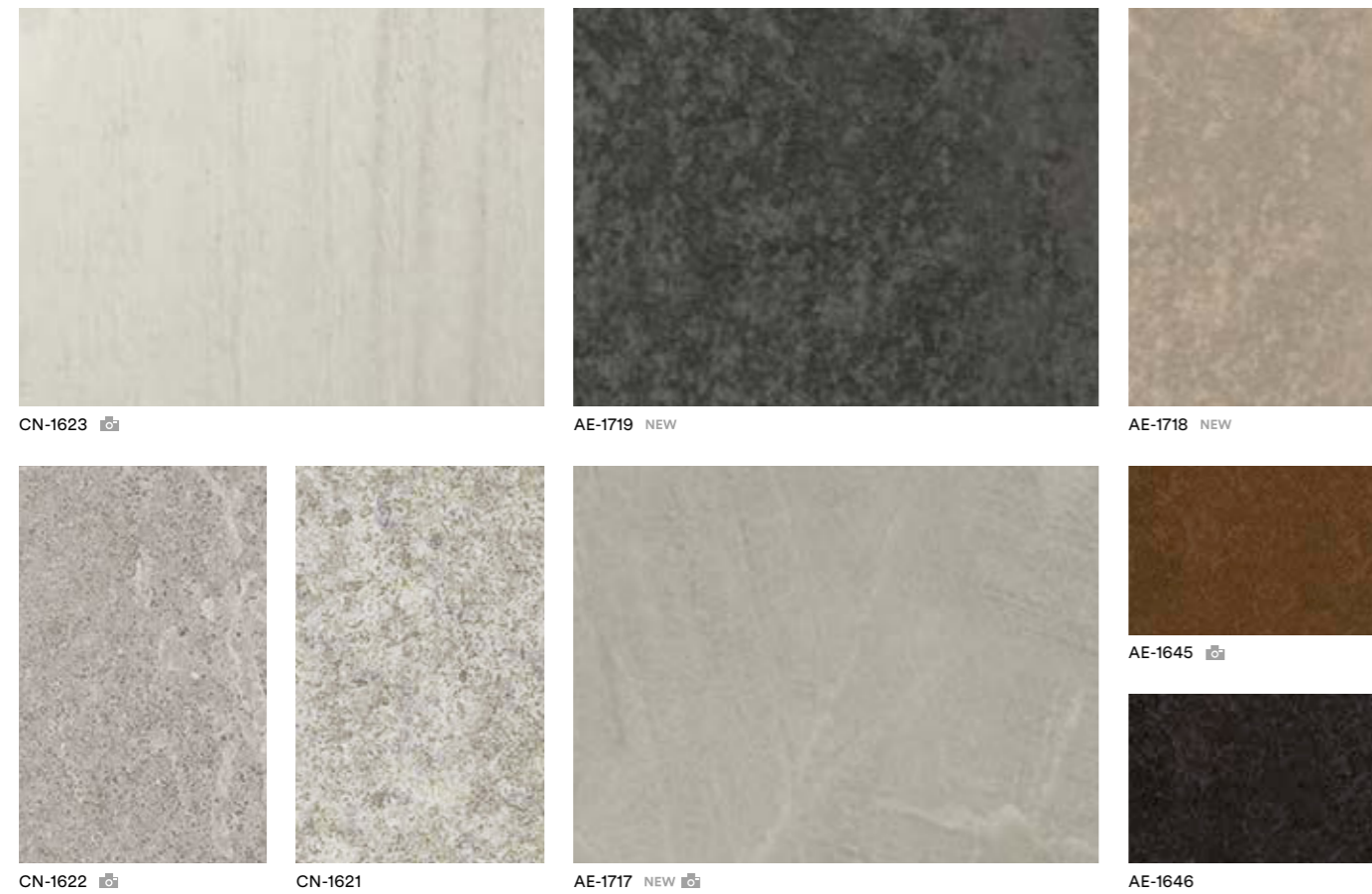
- ☀ For interior applications requiring maximum resistance to fading from UV exposure
- ☀ For interior applications requiring maximum resistance to UV fading, not recommended for use on PVC-coated steel panels
- ⓘ Not recommended for use on compound curved surfaces
- Ⓜ Not recommended for butt joint applications

- NEW New design
- ⓔ Available in E-series
- H A product number ending in "H" indicates horizontal grain direction
- 📷 Pattern is large scale; view full pattern width image at 3M.com/AMD
- ☁ Available in EX Series. See page 43 for visual appearance.

# Sand



# Concrete / Mortar



# Abstract

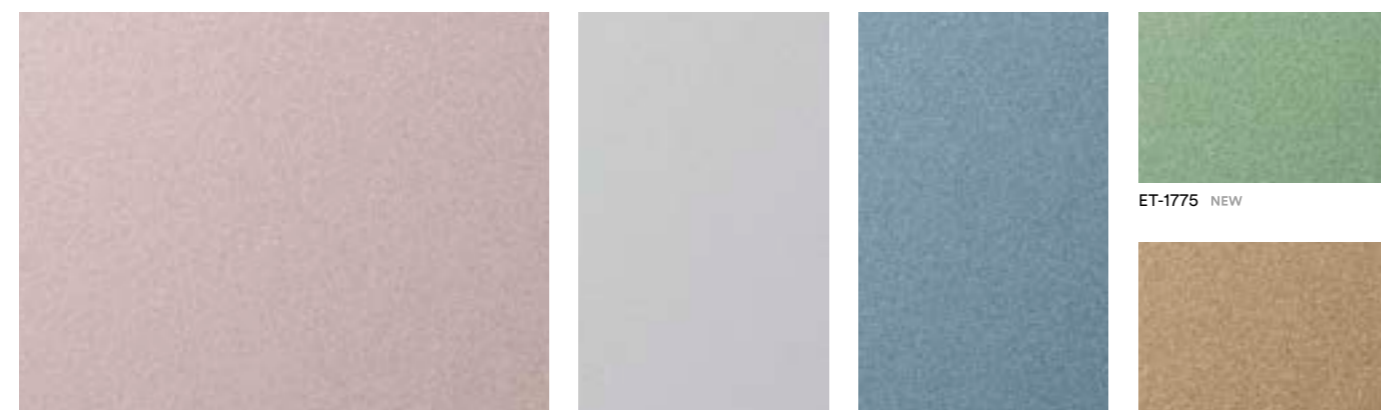




# Effect



ET-1775 NEW



ET-1774 NEW

ET-1773 NEW

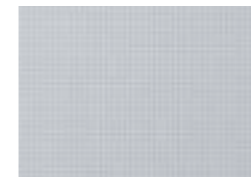
ET-1772 NEW

ET-1776 NEW

ET-1775 NEW

- ☀ For interior applications requiring maximum resistance to fading from UV exposure
- ☀ For interior applications requiring maximum resistance to UV fading, not recommended for use on PVC-coated steel panels
- ⓘ Not recommended for use on compound curved surfaces
- Ⓜ Not recommended for butt joint applications

- NEW New design
- ⓔ Available in E-series
- H A product number ending in "H" indicates horizontal grain direction
- 📷 Pattern is large scale; view full pattern width image at 3M.com/AMD
- ☁ Available in EX Series. See page 43 for visual appearance.



AM-1721 NEW



AM-1697 NEW



AM-1702 NEW



TE-1690 NEW



AM-1720 NEW



AM-1698 NEW



AM-1722 NEW



AM-1701 NEW



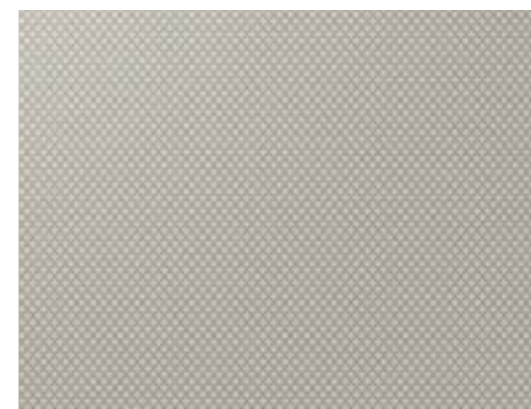
AM-1696 NEW



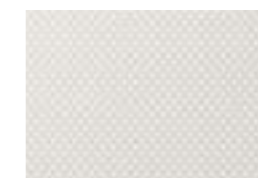
AM-1700 NEW



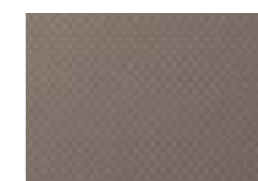
AM-1699 NEW



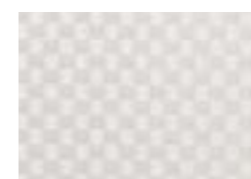
TE-1713 NEW



TE-1714 NEW



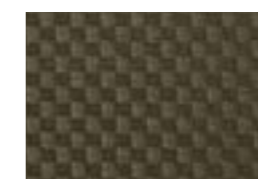
TE-1715 NEW



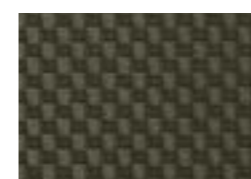
TE-1650



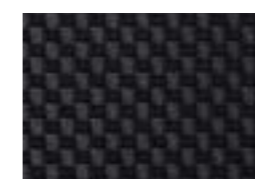
TE-1651



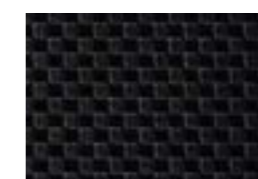
TE-1652



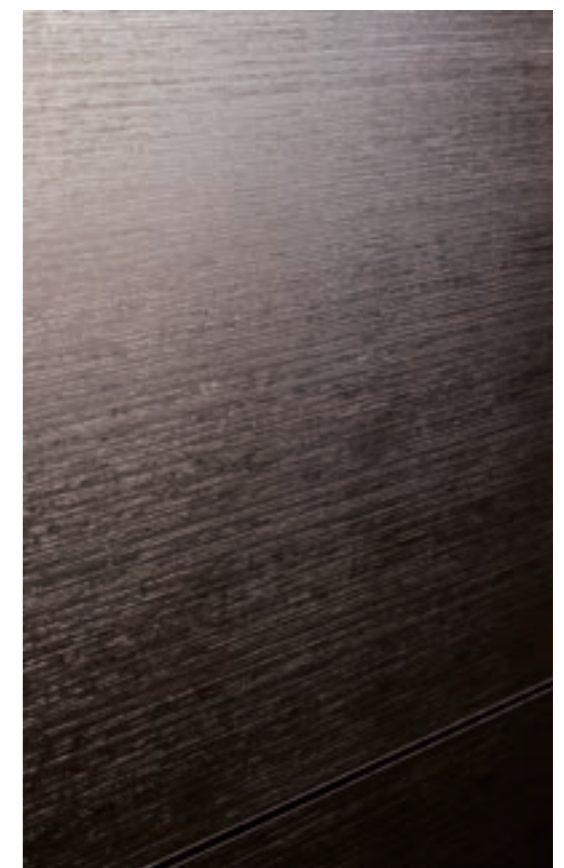
VM-1486



TE-1653



TE-1654



AM-1699 NEW

# Advanced Metallic

A

B

C

D

E

F

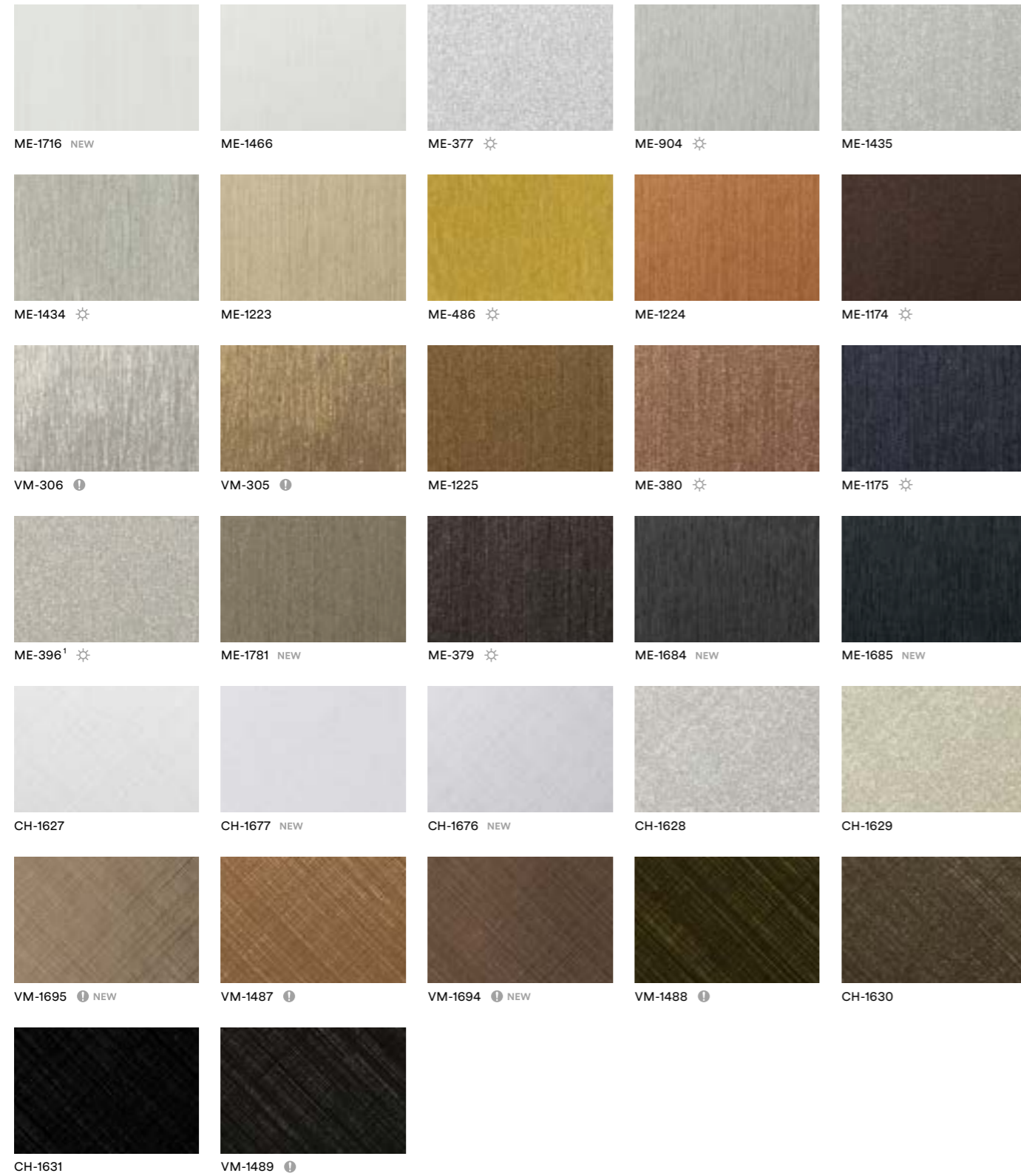
G

H

Effect  
Advanced Metallic



# Metallic Hairline



1 – Same color as PA-1854EX (See page 43)

- ✨ For interior applications requiring maximum resistance to fading from UV exposure
- ☀ For interior applications requiring maximum resistance to UV fading, not recommended for use on PVC-coated steel panels
- ⓘ Not recommended for use on compound curved surfaces
- Ⓜ Not recommended for butt joint applications

- NEW New design
- Ⓜ Available in E-series
  - H A product number ending in "H" indicates horizontal grain direction
  - 📷 Pattern is large scale; view full pattern width image at 3M.com/AMD
  - ☁ Available in EX Series. See page 43 for visual appearance.

# Metallic Texture

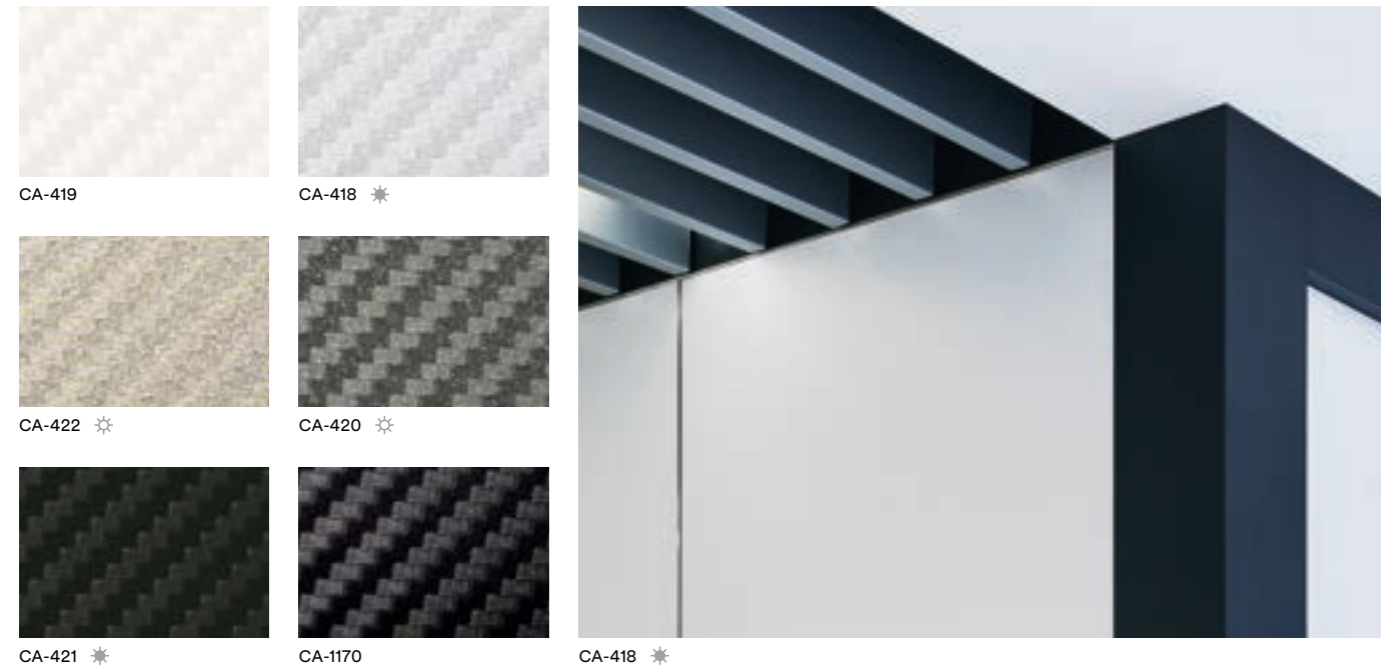


# Metallic





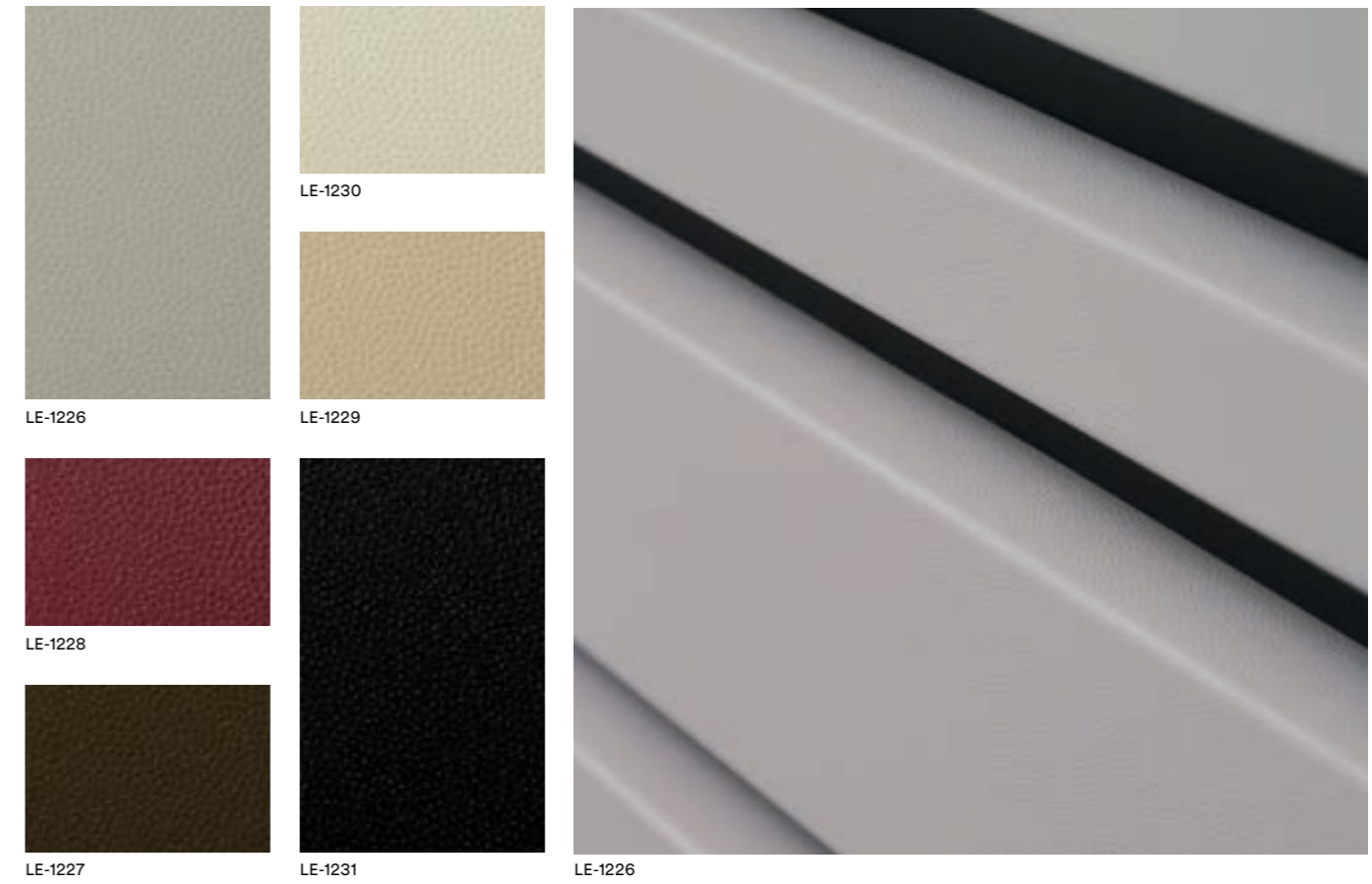
# Carbon



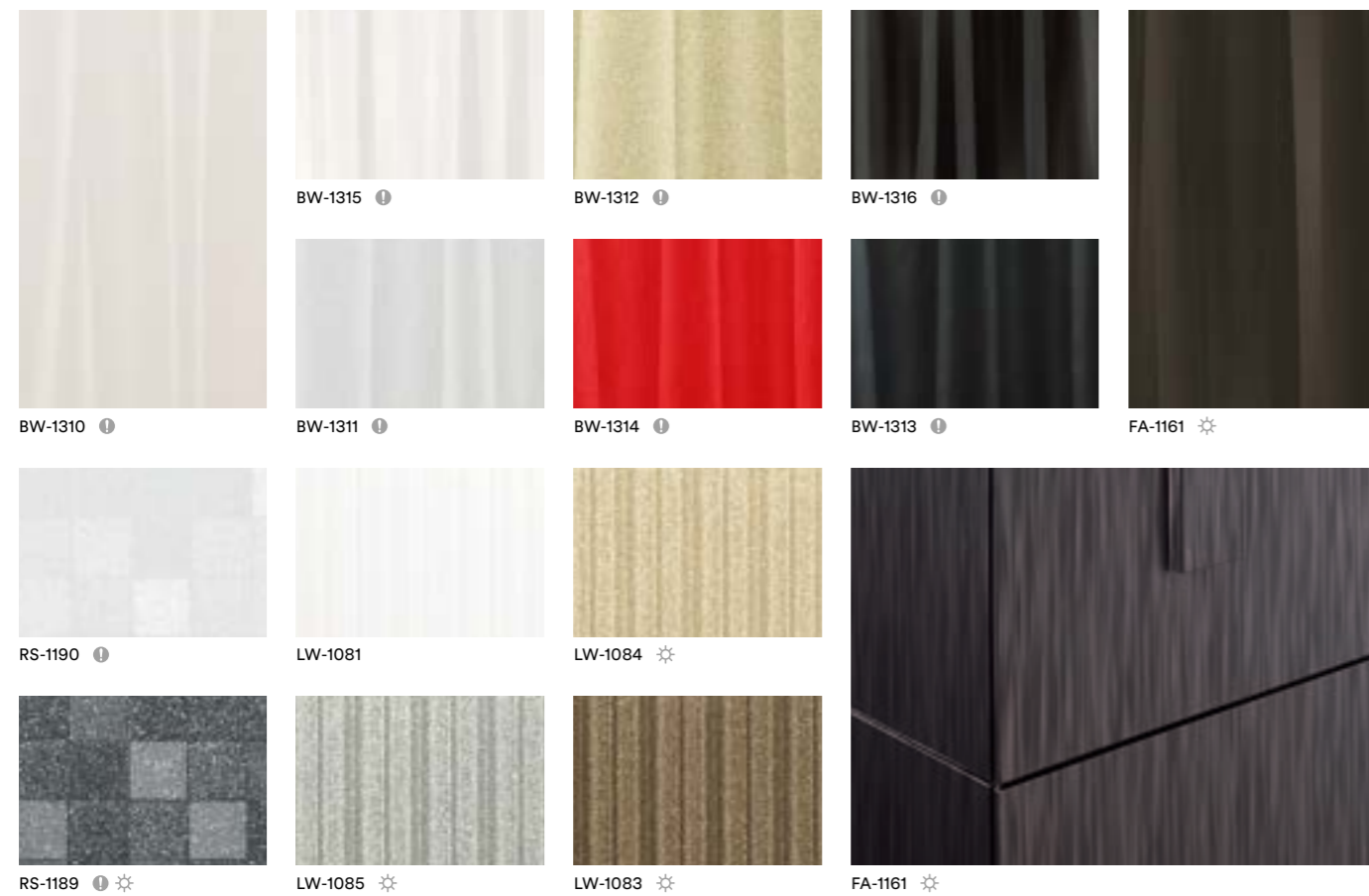
- ☀ For interior applications requiring maximum resistance to fading from UV exposure
- ☀ For interior applications requiring maximum resistance to UV fading, not recommended for use on PVC-coated steel panels
- ⓘ Not recommended for use on compound curved surfaces
- ⚠ Not recommended for butt joint applications

- NEW New design
- ⓔ Available in E-series
  - Ⓜ A product number ending in "H" indicates horizontal grain direction
  - 📷 Pattern is large scale; view full pattern width image at 3M.com/AMD
  - 🌐 Available in EX Series. See page 43 for visual appearance.

# Fine Leather



# Entertainment



# High Gloss





# Single Color

A						
	PS-1187 *	PS-983 *	PS-998 *	PS-1188 *	PS-959 * ☁	PS-503 *
B						
	PS-975 *	PS-1436	PS-1186 *	PS-976 * ☁	PS-957 * ☁	PS-1441
C						
	PS-1185 *	PS-031 *	PS-982 *	PS-1437	PS-955 *	
D						
	PS-090 * ☁	PS-042 *	PS-048 *	PS-1184 *	PS-954 *	
E						
	PS-073 *	PS-075 *	PS-093 *	PS-1438	PS-952 *	
F						
	PS-091 *	PS-027 *	PS-022 *	PS-971 *	PS-950 *	
G						
	PS-034 *	PS-074 *	PS-1005 *	PS-949 *		
H						
	PS-292 *	PS-1439	PS-992 *			
I						
	PS-110 *	PS-1440	PS-885 *			
J						
	PS-293 *	PS-948 *	PS-504 *			
K						
	PS-294 *	PS-999 *	PS-1183MT *			

- \* For interior applications requiring maximum resistance to fading from UV exposure
- ☁ For interior applications requiring maximum resistance to UV fading, not recommended for use on PVC-coated steel panels
- ⓘ Not recommended for use on compound curved surfaces
- Ⓜ Not recommended for butt joint applications

- NEW New design
- ⓔ Available in E-series
- H A product number ending in "H" indicates horizontal grain direction
- 📐 Pattern is large scale; view full pattern width image at 3M.com/AMD
- ☁ Available in EX Series. See page 43 for visual appearance.

# Single Color

PS-096 *	PS-719 *	PS-1448	PS-1452	PS-112 *
PS-1442	PS-116 *	PS-713 *	PS-281 *	PS-1820 NEW
PS-1443	PS-1446	PS-1450	PS-1454	PS-1459
PS-912 *	PS-1010 *	PS-920 *	PS-121 *	PS-910 *
PS-1444	PS-135 *	PS-506 *	PS-1455	PS-900 *
PS-134 *	PS-914 *	PS-140 *	PS-1456	PS-1008 *
PS-141 *	PS-665 *	PS-668 *	PS-1823 NEW	PS-1009 *
PS-1821 NEW	PS-139 *	PS-1825 NEW	PS-1457	PS-151 *
PS-1822 NEW	PS-1447	PS-1826 NEW	PS-1824 NEW	PS-107 *



# Abrasion Resistant

## For High-Traffic Applications

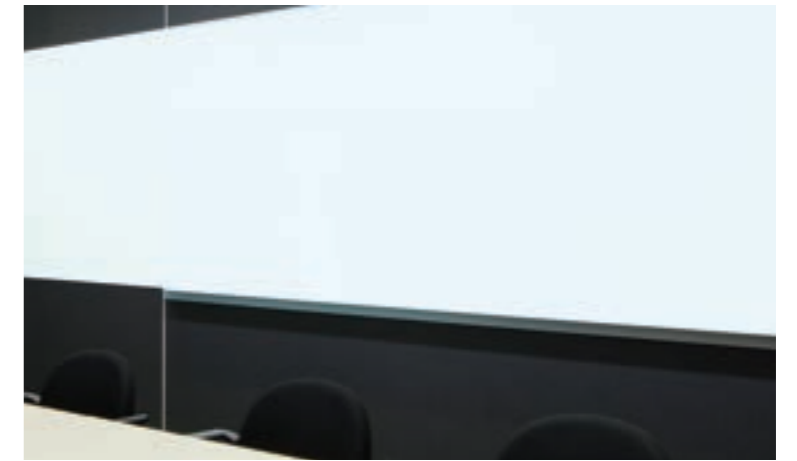


AR Series Custom Color

- ☀ For interior applications requiring maximum resistance to fading from UV exposure
- ☀ For interior applications requiring maximum resistance to UV fading, not recommended for use on PVC-coated steel panels
- ⓘ Not recommended for use on compound curved surfaces
- ⚠ Not recommended for butt joint applications

- NEW New design
- Ⓜ Available in E-series
  - H A product number ending in "H" indicates horizontal grain direction
  - 📷 Pattern is large scale; view full pattern width image at 3M.com/AMD
  - ☁ Available in EX Series. See page 43 for visual appearance.

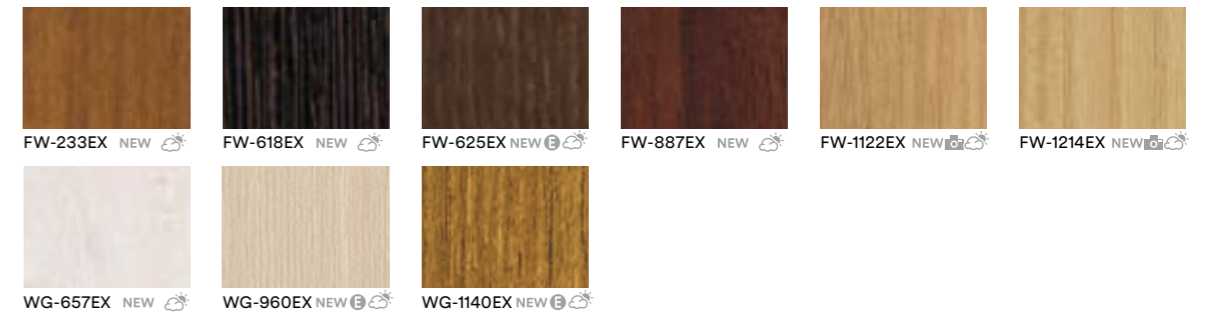
# Whiteboard



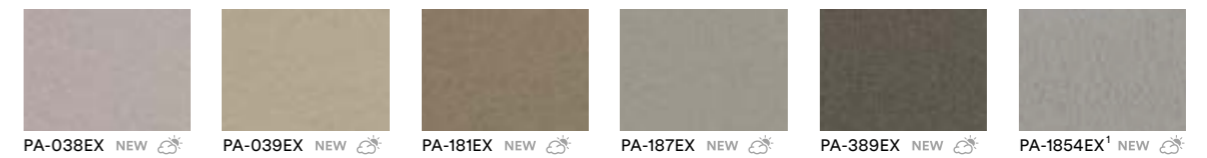
WH-111 ⓘ

# Exterior

## Wood Grain



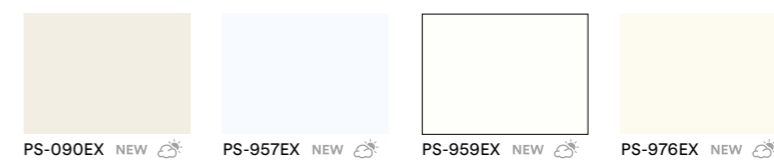
## Metallic



## Abstract



## Single Color



1 – Same color as ME-396 (See page 36)



# Technical Information

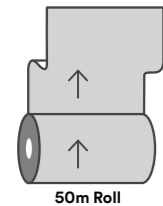
## DI-NOC Series Selection

It is important to consider the intended use when selecting DI-NOC patterns. Please refer to the most up-to-date 3M™ DI-NOC™ Architectural Finishes Technical Data Sheet and Installation Guide, which can be found by visiting 3MArchitecturalMarkets.com. You may also contact your 3M Sales Representative for additional information.

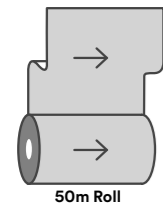
## Horizontal Print Series

3M™ DI-NOC™ Architectural Finishes Fine Wood (FW) and Wood Grain (WG) Series include horizontal pattern options, which simplify the use of horizontal wood grains by changing the print direction.

Printing direction = Direction of the wood grain length

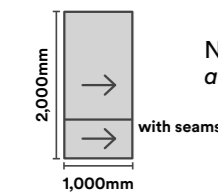


**Vertical Print Series**  
Wood grain patterns of vertical print series:  
*horizontal to the length*

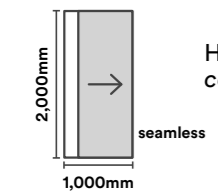


**Horizontal Print Series**  
Horizontal print series wood grain patterns:  
*vertical to the length*

## Affixing a Horizontal Pattern Film on Door



Normal wood grain patterns:  
*affix twice for one door*



Horizontal print series wood grain patterns:  
*complete by affixing once*

▶ The following chart reflects the horizontal patterns with the corresponding vertical match.

Horizontal	Vertical
FW-606H	FW-1134
FW-607H	FW-1133
FW-608H	FW-1123
FW-609H	FW-1113
FW-1039H	FW-1124
FW-1040H	FW-1137
FW-1121H	FW-1022
FW-1130H	FW-1129
FW-1136H	FW-1135
FW-1139H	FW-1138
FW-1145H	FW-1143
WG-1392H	WG-2705

Horizontal Print Series products have "H" at the end of the sample product numbers.

# Technical Information

## Product Characteristics

The values in these tables are typical, and are based on test data deemed reliable but are not warranted.

Characteristic	Value	
Material	Film	Vinyl for most patterns; Polyolefin for E-series; Polyester for select patterns such as WH-111
	Adhesive	Pressure-sensitive acrylic, permanent
	Release Liner	Silicone-coated poly paper
Thickness	Film + Adhesive	8 mils (200 microns) nominal, not including release liner; Some designs vary slightly in thickness due to embossing
	Release Liner	6.2 mils (157 microns)
Roll Size	Standard and E-Series	48 in. x 164 ft. (1,220mm x 50m)
	AR, WG-GN, VM, ET	48 in. x 82 ft. (1220mm x 25m)
Weight	55 lbs. (25kg) (approx.) for a 164 ft. (50m) roll	

## Product Performance

The values in these tables are typical, and are based on test data deemed reliable but are not warranted.

Characteristic	Evaluation	Results
Dimensional Stability*	4 in. x 4 in. (100mm x 100mm) crosscut in film, after 2 days at room temperature	Largest gap: < 0.01 in. (0.3mm)
Thermal Cycle Resistance*	Cycled between -22°F and 150°F (-30°C and 65°C) for 12 days	No delamination or visible change
Moisture Resistance*	Aged at 104°F (40°C), 95% humidity for 30 days	No delamination or visible change
Cold Impact Resistance*	2 lb. (907g) weight dropped from 5 in. (12.7cm) height, at 32°F (0°C) using a Gardner Impact Tester	No cracks in film
Abrasion Resistance	Taber® CS-17 Abrasion wheel: 1kg loading weight, 7,000 cycles	No wear-through of surface finish
Fire Resistance	When used in Interior Applications as defined by NFPA 101 "Life Safety Code", Test Method ASTM E84	Most Products have Class A
Industry-Specific Testing	International Maritime Organization certification, Intertek Firedoor, USCG	Contact 3M for certification details

\*Product applied to an aluminum plate



# Technical Information

## Stain Resistance

Contaminant was in contact with the film surface for 24 hours and then removed using water or mild detergent. Results may vary.

Contaminant	Results
Coffee	●
Tea	○
Cola	●
Milk	●
Red Wine	●
Ketchup	●
Soy Sauce	●
Cooking Oil	●
Vinegar	●
Mustard	●
Crayon	○
Shoe Polish	◐
Betadine Iodine	●
Soap Solution (1%)	●
Ammonia Solution (10%)	●
Citrate Solution (10%)	●
Ethyl Alcohol (50%)	●

● = Removed with water  
○ = Removed with mild detergent  
◐ = A little stain remained

## Cleaning and Maintenance

Regular cleaning will help maintain the Product's appearance. Use only clean, nick-free tools and wipe gently. Do not use ammonia, chlorine or organic-based cleaning products, polishing or cleaning compounds, sponges, brushes or electric polishing equipment.

Problem	Solution
Dust and Grit	Wipe with a soft, damp cloth.
Soiled (but not gritty)	Clean using water and a soft cloth.
Heavily Soiled	Clean first using a solution of mild liquid detergent and water, then use clear water. Wipe gently with a soft cloth.

## Application and Removal Guidelines

The values in these tables are typical, and are based on test data deemed reliable but are not warranted. See the 3M™ DI-NOC™ Architectural Finishes Installation Guide for additional information.

Characteristic	Value
Application Surface Type	Smooth, hard, non-porous (sealed) material
Application Location	Interior
Application Temperature	54–100°F (12–38°C) air and application surface
Application Method	Dry application
High Humidity Environments	Products are not recommended for interior applications where condensation consistently occurs.
Product Removal	Heat at 176–212°F (80–100°C)

## Resistance to Solvents, Cleaners and other Chemicals

Film was applied to an aluminum plate, left for 72 hours, then immersed in the following chemicals:

Classification	Solvent	Immersion Time	Result
Water	Water	24 hours	No visible change
Acid	Hydrogen Peroxide	72 hours	No visible change
Alcohol	Ethanol	24 hours	No visible change
	Isopropyl Alcohol	72 hours	
Cleaners, Disinfectants and Other Chemicals	Clorox® Bleach — 50% bleach/50% water	72 hours	No visible change
	Ecolab® TB Disinfectant Cleaner		
	Formula 409®		
	Lysol®		
	3M™ Quat Disinfectant #5 — 3M		
	3M™ Sharpshooter™ — 3M		
	Virox®		

Refer to the 3M™ DI-NOC™ Technical Data Sheet for additional details.

# Technical Information

## Adhesion Compatibility with Application Surfaces

The following table contains peel adhesion information for the Product peeled from various surfaces. A number of surfaces have acceptable adhesion without the use of adhesion promoter. Examples of increased adhesion with adhesion promoters on certain surfaces is presented. Surfaces vary widely, so adhesion should be assessed for each customer substrate. Some surfaces are porous and must be sealed before application of DI-NOC to prevent outgassing of the surface over time.

Test specimens were applied to the substrate and conditioned at 68°F (20°C) for 48 hours, then peel tested at 180° at a tensile speed of 12 in./min. (300mm/min.).

Substrate	Application Surface	Adhesion Promoter: lb./in. (N/25mm)		
		No Adhesion Promoter	WP-2000* (water-based)	3M™ Tape Primer 94 (solvent-based)
Wood	MDF (with sealer)	● <sup>3</sup>	●	●
	Painted MDF	●	●	●
Boards	Gypsum Board (with skim coat and sealer)	● <sup>3</sup>	●	●
Metals	Aluminum	●	●	●
	Anodized Aluminum	●	●	●
	Stainless Steel	●	●	●
Glass	Glass	●	●	●
Plastics <sup>1</sup>	ABS	●	●	●
	Acrylic	●	●	●
	Polyester (PETG)	●	●	●
	Polypropylene	○	●	●
	Polyethylene	○	●	○
	Polycarbonate	●	●	●
	DI-NOC Film	● <sup>2</sup>	●	●

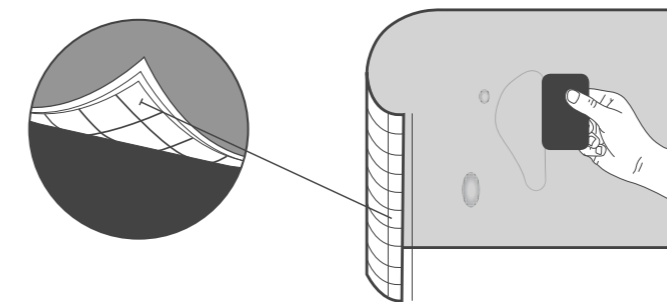
\*WP-2000 undiluted for testing. Adhesion promoter may add surface texture. Examine applied DI-NOC pattern for acceptance of visual appearance.

● = Acceptable adhesion  
○ = Fails in adhesion

- Bubbles may appear under film due to outgassing if plastic substrate is not fully cured before application.
- If DI-NOC is wrapped and overlapped around edges, use of an adhesion promoter is highly recommended due to additional stress from wrapping DI-NOC.
- Sealer was wiped with Isopropyl alcohol to improve adhesion. Adhesion was tested using a spring scale per the 3M™ DI-NOC™ Architectural Finishes Installation Guide and passed at 800–1,000 g/in.

## Comply™ Adhesive Technology

Comply Adhesive has air-release channels that allow trapped air bubbles to escape during application. Dry application only.





# Index: New Designs

Product Code	Page	Column
<b>AE   Earth / Stone</b>		
AE-1717 NEW	32	3-G
AE-1718 NEW	32	5-E
AE-1719 NEW	32	3-E
<b>AM   Advanced Metallic</b>		
AM-1696	35	3-C
AM-1697	35	1-B
AM-1698	35	5-B
AM-1699	35	4-C
AM-1700	35	3-D
AM-1701	35	2-C
AM-1702	35	2-A
AM-1720	35	5-A
AM-1721	35	1-A
AM-1722	35	1-C
<b>AR   Abrasion Resistant</b>		
AR-1723	42	4-A
AR-1724	42	5-A
AR-1725	42	3-A
AR-1726	42	6-A
<b>CH   Metallic Hairline</b>		
CH-1676	36	3-E
CH-1677	36	2-E
<b>ET   Effect</b>		
ET-1772	34	4-G
ET-1773	34	3-G
ET-1774	34	1-G
ET-1775	34	5-G
ET-1776	34	5-H
<b>FA   Multiple Categories</b>		
FA-1678	29	1-A
FA-1679	29	4-A
FA-1680	29	3-B
<b>FE   Metal Leaf / Textile</b>		
FE-1727	28	3-C
FE-1728	28	3-D
FE-1729	28	3-F
FE-1730	28	1-E
FE-1731	28	1-C
FE-1732	28	3-E
FE-1733	28	5-A

Product Code	Page	Column
<b>FW   Fine Wood</b>		
FW-1681	10	3-E
FW-1682	10	3-A
FW-1683	9	4-A
FW-1734H	12	3-C
FW-1735H	12	2-F
FW-1736H	17	1-A
FW-1737	13	1-C
FW-1738	13	3-E
FW-1739	13	3-G
FW-1740	17	1-G
FW-1741	17	2-C
FW-1742	9	2-F
FW-1743	13	4-A
FW-1744	15	2-A
FW-1745	10	1-A
FW-1746	16	1-F
FW-1747	10	1-C
FW-1748	10	4-E
FW-1749	14	4-B
FW-1750	10	4-D
FW-1751	17	1-E
FW-1752H	16	3-E
FW-1753H	17	2-F
FW-1754	11	1-A
FW-1755	12	1-C
FW-1756	11	3-B
FW-1757	17	3-F
FW-1758	9	3-A
FW-1759	17	4-C
FW-1760	14	1-F
FW-1761	9	1-A
FW-1762	17	3-C
FW-1763	14	1-D
FW-1764	14	3-F
FW-1765	10	4-B
FW-1766	10	4-B
FW-1767	11	2-A
FW-1768	15	1-A
FW-1769	14	2-G
FW-1770	11	1-F
FW-1771H	12	3-B
<b>ME   Metallic</b>		
ME-1684	36	4-D
ME-1685	36	5-D
ME-1716	36	1-A

Product Code	Page	Column
<b>MW   Metallic Wood</b>		
MW-1782	18	1-F
MW-1783	18	1-D
MW-1832	18	3-A
MW-1833	18	1-A
MW-1834	18	4-A
<b>NU   Nuno / Textile</b>		
NU-1784	26	1-E
NU-1785	26	2-E
NU-1786	26	3-E
NU-1787	26	2-F
NU-1788	26	1-F
NU-1789	27	1-C
NU-1790	27	1-B
NU-1791	26	2-G
NU-1792	26	2-H
NU-1793	26	1-G
NU-1794	26	5-E
NU-1795	26	5-G
NU-1796	26	3-G
NU-1797	26	5-H
NU-1798	27	2-C
NU-1799	27	3-D
<b>PS   Single Color</b>		
PS-1820	41	5-B
PS-1821	41	1-I
PS-1822	41	1-J
PS-1823	41	4-H
PS-1824	41	4-J
PS-1825	41	3-I
PS-1826	41	3-J
<b>RT   Aged Metal</b>		
RT-1827	31	1-G
<b>SI   Silk</b>		
SI-1686	26	3-A
SI-1687	26	4-C
SI-1688	26	3-C
SI-1689	26	1-A

Product Code	Page	Column
<b>ST   Stone</b>		
ST-1828	32	5-A
ST-1829	32	5-B
ST-1830	32	3-C
ST-1831	32	1-A
<b>TE   Advanced Metallic</b>		
TE-1690	35	4-A
TE-1713	35	1-E
TE-1714	35	3-E
TE-1715	35	3-F
<b>VM   Metallic</b>		
VM-1691	28	3-A
VM-1692	28	3-B
VM-1693	28	1-A
VM-1694	36	3-F
VM-1695	36	1-F
<b>WG   Wood Grain</b>		
WG-1703	19	2-H
WG-1704	23	5-D
WG-1705	20	4-A
WG-1706	23	3-D
WG-1707	20	5-A
WG-1708	23	4-A
WG-1709	20	1-A
WG-1710	19	1-H
WG-1711GN	22	1-H
WG-1712GN	22	1-G
WG-1835	24	2-D
WG-1836	23	2-E
WG-1837	20	4-H
WG-1838	20	5-D
WG-1839	19	1-C
WG-1840	20	3-H
WG-1841	22	3-C
WG-1842GN	22	3-H
WG-1843	19	5-D
WG-1844	20	3-F
WG-1845	20	5-F
WG-1846	19	2-B
WG-1847	19	5-A
WG-1848	23	2-A

# Index: E-Series

Product Code	Page	Column
<b>FW   Fine Wood</b>		
FW-236	12	4-A
FW-237	13	3-D
FW-240	15	1-E
FW-324	17	4-B
FW-336	9	4-E
FW-337	11	3-D
FW-619	15	2-F
FW-625	16	3-A
FW-640	17	3-B
FW-641	17	3-E
FW-643	16	2-D
FW-648	16	3-B
FW-649	15	4-F
FW-651	16	1-B
FW-1129	10	1-D
FW-1130H	10	2-D
FW-1138	9	1-C
FW-1139H	9	2-C
FW-1211	10	3-B
FW-1212	12	2-A
FW-1213	11	1-C
FW-1217	9	4-G

Product Code	Page	Column
FW-1218	11	2-E
FW-1255	9	3-F
FW-1256	10	2-E
FW-1257	12	1-D
FW-1261	9	4-F
FW-1262	10	1-G
FW-1265	12	1-A
FW-1266	11	2-C
FW-1271	9	1-E
FW-1272	10	4-G
FW-1273	14	4-A
FW-1274	9	3-G
FW-1275	17	2-B
FW-1276	13	2-E
FW-1277	14	4-C
FW-1278	13	1-G
FW-1293	10	1-F
FW-1294	11	4-D
FW-1296	12	2-C
FW-1297	14	2-D
FW-1300	11	4-C
FW-1301	17	1-D
FW-1302	11	4-A
FW-1304	11	1-B

Product Code	Page	Column
<b>PG   Abstract</b>		
PG-189	33	5-H
PG-197	33	3-F
PG-1182	33	4-H
<b>WG   Wood Grain</b>		
WG-159	23	4-H
WG-250	20	1-G
WG-256	20	4-G
WG-662	19	5-E
WG-664	24	5-A
WG-695	23	4-D
WG-696	19	5-F
WG-831	21	4-D
WG-845	21	2-B

Product Code	Page	Column
<b>CA   Carbon</b>		
CA-418	38	2-A
CA-419	38	1-A
CA-420	38	2-B
CA-421	38	1-C
CA-422	38	1-B
CA-1170	38	2-C
<b>CH   Metallic Hairline</b>		
CH-1627	36	1-E
CH-1628	36	4-E
CH-1629	36	5-E
CH-1630	36	5-F
CH-1631	36	1-G
CH-1676	36	3-E
CH-1677	36	2-E

- \* For interior applications requiring maximum resistance to fading from UV exposure
- ☀ For interior applications requiring maximum resistance to UV fading, not recommended for use on PVC-coated steel panels
- ⚠ Not recommended for use on compound curved surfaces
- W Not recommended for butt joint applications

- NEW New design
- E Available in E-Series
- H A product number ending in "H" indicates horizontal grain direction
- 📐 Pattern is large scale; view full pattern width image at 3M.com/AMD
- 🌿 Available in EX Series. See page 43 for visual appearance.

Product Code	Page	Column
<b>AE   Earth / Stone</b>		
AE-1632	31	3-D
AE-1633	31	4-D
AE-1634	31	1-D
AE-1635	31	2-D
AE-1636	31	1-E
AE-1637	31	3-A
AE-1638	31	1-A
AE-1639	31	3-B
AE-1640	31	5-B
AE-1641	31	5-A
AE-1642	31	4-A
AE-1643	29	4-C
AE-1644	29	5-B
AE-1645	32	5-G
AE-1646	32	5-H
AE-1717	32	3-G
AE-1718	32	5-E
AE-1719	32	3-E
<b>AM   Advanced Metallic</b>		
AM-1696	35	3-C
AM-1697	35	1-B
AM-1698	35	5-B
AM-1699	35	4-C
AM-1700	35	3-D
AM-1701	35	2-C
AM-1702	35	2-A
AM-1720	35	5-A
AM-1721	35	1-A
AM-1722	35	1-C
<b>AR   Abrasion Resistant</b>		
AR-1115	42	1-B
AR-1116	42	2-C
AR-1117	42	6-B
AR-1118	42	6-C
AR-1119	42	7-B
AR-1120	42	7-C
AR-1245	42	1-A
AR-1246	42	5-B
AR-1247	42	2-B
AR-1248	42	3-B
AR-1249	42	4-C
AR-1250	42	4-B
AR-1251	42	3-C
AR-1661	42	1-C
AR-1662	42	7-A
AR-1663	42	5-C
AR-1664	42	2-A
AR-1723	42	4-A
AR-1724	42	5-A
AR-1725	42	3-A
AR-1726	42	6-A
<b>BW   Entertainment</b>		
BW-1310	38	1-E
BW-1311	38	2-F
BW-1312	38	3-E
BW-1313	38	4-F
BW-1314	38	3-F
BW-1315	38	2-E
BW-1316	38	4-E
<b>CA   Carbon</b>		
CA-418	38	2-A
CA-419	38	1-A
CA-420	38	2-B
CA-421	38	1-C
CA-422	38	1-B
CA-1170	38	2-C
<b>CH   Metallic Hairline</b>		
CH-1627	36	1-E
CH-1628	36	4-E
CH-1629	36	5-E
CH-1630	36	5-F
CH-1631	36	1-G
CH-1676	36	3-E
CH-1677	36	2-E

# Index: All Designs

Product Code	Page	Column
<b>CN   Concrete / Mortar</b>		
CN-1621	32	2-G
CN-1622	32	1-G
CN-1623	32	1-E

# Index: All Designs

Product Code	Page	Column
FW-1759	NEW 17	4-C
FW-1760	NEW 14	1-F
FW-1761	NEW 9	1-A
FW-1762	NEW 17	3-C
FW-1763	NEW 14	1-D
FW-1764	NEW 14	3-F
FW-1765	NEW 9	4-B
FW-1766	NEW 10	4-B
FW-1767	NEW 11	2-A
FW-1768	NEW 15	1-A
FW-1769	NEW 14	2-G
FW-1770	NEW 11	1-F
FW-1771H	NEW 12	3-B
FW-1801	NEW 15	4-D
FW-1805	NEW 12	2-G
FW-1810	NEW 10	3-E
FW-1811	NEW 9	2-D
FW-7001	NEW 9	1-D
FW-7006	NEW 15	1-D
FW-7007	NEW 17	3-A
FW-7008	NEW 14	2-F
FW-7009	NEW 16	2-C
FW-7011	NEW 12	1-F
FW-7013	NEW 15	4-G
FW-7014	NEW 16	3-D
FW-7015	NEW 16	4-A
FW-7016	NEW 15	3-F
FW-7017	NEW 9	4-C

### HG | High Gloss

HG-1201	NEW 39	2-H
HG-1205	NEW 39	1-F
HG-1511	NEW 39	1-G
HG-1512	NEW 39	2-F
HG-1513	NEW 39	2-G
HG-1514	NEW 39	1-H

### HS | Mono Contrast

HS-1655	NEW 29	3-F
HS-1656	NEW 29	1-F
HS-1657	NEW 29	3-G
HS-1658	NEW 29	2-H

### LE | Leather

LE-018	NEW 30	1-D
LE-137	NEW 30	3-C
LE-517	NEW 30	4-C
LE-703	NEW 30	5-E
LE-783	NEW 30	5-D
LE-1104	NEW 30	4-E
LE-1105	NEW 30	1-C
LE-1106	NEW 30	4-D
LE-1108	NEW 30	3-D
LE-1109	NEW 30	2-E
LE-1171	NEW 30	5-A
LE-1226	NEW 39	1-A
LE-1227	NEW 39	1-D
LE-1228	NEW 39	1-C
LE-1229	NEW 39	2-B
LE-1230	NEW 39	2-A
LE-1231	NEW 39	2-C
LE-1551	NEW 30	5-B
LE-1552	NEW 30	2-C
LE-1553	NEW 30	1-A
LE-1554	NEW 30	2-B
LE-1555	NEW 30	4-B
LE-1556	NEW 30	2-A
LE-2128	NEW 30	2-D
LE-2367	NEW 30	1-E
LE-2741	NEW 30	3-A
LE-2742	NEW 30	4-A
LE-2782	NEW 30	3-B

### LW | Entertainment

LW-1081	NEW 38	2-G
LW-1083	NEW 38	3-H
LW-1084	NEW 38	3-G
LW-1085	NEW 38	2-H

Product Code	Page	Column
ME-147	NEW 37	5-A
ME-377	NEW 36	3-A
ME-379	NEW 36	3-D
ME-380	NEW 36	4-C
ME-388	NEW 37	1-B
ME-391	NEW 37	4-B
ME-396	NEW 36	1-D
ME-431	NEW 37	5-G
ME-432	NEW 37	3-D
ME-433	NEW 37	2-D
ME-486	NEW 36	3-B
ME-904	NEW 36	4-A
ME-1174	NEW 36	5-B
ME-1175	NEW 36	5-C
ME-1176	NEW 37	4-G
ME-1223	NEW 36	2-B
ME-1224	NEW 36	4-B
ME-1225	NEW 36	3-C
ME-1434	NEW 36	1-B
ME-1435	NEW 36	5-A
ME-1466	NEW 36	2-A
ME-1467	NEW 37	1-D
ME-1468	NEW 29	1-D
ME-1469	NEW 29	2-D
ME-1684	NEW 36	4-D
ME-1685	NEW 36	5-D
ME-1716	NEW 36	1-A
ME-1777	NEW 37	2-A
ME-1778	NEW 37	3-A
ME-1779	NEW 37	4-A
ME-1780	NEW 37	1-A
ME-1781	NEW 36	2-D

### MW | Metallic Wood

MW-776	NEW 18	2-E
MW-777	NEW 18	3-E
MW-1177	NEW 18	2-D
MW-1242	NEW 18	2-C
MW-1243	NEW 18	3-C
MW-1244	NEW 18	4-C
MW-1416	NEW 18	1-C
MW-1417	NEW 18	2-F
MW-1418	NEW 18	4-B
MW-1419	NEW 18	3-D
MW-1420	NEW 18	4-E
MW-1421	NEW 18	4-D
MW-1782	NEW 18	1-F
MW-1783	NEW 18	1-D
MW-1832	NEW 18	3-A
MW-1833	NEW 18	1-A
MW-1834	NEW 18	4-A

### NU | Nuno/Textile

NU-1237	NEW 27	1-A
NU-1238	NEW 27	3-A
NU-1239	NEW 27	2-A
NU-1240	NEW 27	4-A
NU-1241	NEW 27	5-A
NU-1601	NEW 27	3-C
NU-1602	NEW 27	4-C
NU-1603	NEW 27	4-D
NU-1604	NEW 27	5-C
NU-1605	NEW 27	5-D
NU-1784	NEW 26	1-E
NU-1785	NEW 26	2-E
NU-1786	NEW 26	3-E
NU-1787	NEW 26	2-F
NU-1788	NEW 26	1-F
NU-1789	NEW 27	1-C
NU-1790	NEW 27	1-B
NU-1791	NEW 26	2-G

Product Code	Page	Column
NU-1792	NEW 26	2-H
NU-1793	NEW 26	1-G
NU-1794	NEW 26	5-E
NU-1795	NEW 26	5-G
NU-1796	NEW 26	3-G
NU-1797	NEW 26	5-H
NU-1798	NEW 27	2-C
NU-1799	NEW 27	3-D

### PA | Metallic

PA-036	NEW 37	3-G
PA-038	NEW 37	3-F
PA-039	NEW 37	5-E
PA-045	NEW 37	4-D
PA-046	NEW 37	2-E
PA-175	NEW 37	5-F
PA-177	NEW 37	2-G
PA-178	NEW 37	1-G
PA-179	NEW 37	2-F
PA-180	NEW 37	1-E
PA-181	NEW 37	3-H
PA-183	NEW 37	2-H
PA-184	NEW 37	1-H
PA-185	NEW 37	4-H
PA-187	NEW 37	5-D
PA-320	NEW 37	1-F
PA-389	NEW 37	5-H
PA-390	NEW 37	4-E
PA-683	NEW 37	3-E

### PC | Sand

PC-491	NEW 33	2-B
PC-672	NEW 33	1-A
PC-758	NEW 33	1-C
PC-760	NEW 33	2-C
PC-1178	NEW 33	3-B
PC-1179	NEW 33	3-A
PC-1181	NEW 33	2-A

### PG | Abstract

PG-1182	NEW 33	4-H
PG-189	NEW 33	5-H
PG-190	NEW 33	5-G
PG-193	NEW 33	1-H
PG-194	NEW 33	2-G
PG-195	NEW 33	3-H
PG-197	NEW 33	3-F

### PS | Single Color

PS-022	NEW 40	4-F
PS-027	NEW 40	3-F
PS-031	NEW 40	3-C
PS-034	NEW 40	3-G
PS-042	NEW 40	3-D
PS-048	NEW 40	4-D
PS-073	NEW 40	2-E
PS-074	NEW 40	4-G
PS-075	NEW 40	3-E
PS-090	NEW 40	2-D
PS-091	NEW 40	2-F
PS-093	NEW 40	4-E
PS-096	NEW 41	1-A
PS-107	NEW 41	5-J
PS-110	NEW 40	4-I
PS-112	NEW 41	5-A
PS-116	NEW 41	2-B
PS-121	NEW 41	4-E
PS-134	NEW 41	1-G
PS-135	NEW 41	2-F
PS-139	NEW 41	2-I
PS-140	NEW 41	3-G
PS-141	NEW 41	1-H
PS-151	NEW 41	5-I
PS-281	NEW 41	4-B
PS-292	NEW 40	4-H
PS-293	NEW 40	4-J
PS-294	NEW 40	4-K
PS-503	NEW 40	6-A

### PT | Abstract

PT-345	NEW 33	1-G
PT-346	NEW 33	5-E
PT-347	NEW 33	5-F
PT-735	NEW 33	3-E

### PWF | Whiteboard

PWF-500	NEW 43	2-A
---------	--------	-----

### RS | Entertainment

RS-1189	NEW 38	1-H
RS-1190	NEW 38	1-G

Product Code	Page	Column
PS-504	NEW 40	6-J
PS-506	NEW 41	3-F
PS-665	NEW 41	2-H
PS-668	NEW 41	3-H
PS-713	NEW 41	3-B
PS-719	NEW 41	2-A
PS-885	NEW 40	6-I
PS-900	NEW 41	5-F
PS-910	NEW 41	5-E
PS-912	NEW 41	1-E
PS-914	NEW 41	2-G
PS-920	NEW 41	3-E
PS-948	NEW 40	5-J
PS-949	NEW 40	6-G
PS-950	NEW 40	6-F
PS-952	NEW 40	6-E
PS-954	NEW 40	6-D
PS-955	NEW 40	6-C
PS-957	NEW 40	5-B
PS-959	NEW 40	5-A
PS-971	NEW 40	5-F
PS-975	NEW 40	1-B
PS-976	NEW 40	4-B
PS-982	NEW 40	4-C
PS-983	NEW 40	2-A
PS-992	NEW 40	6-H
PS-998	NEW 40	3-A
PS-999	NEW 40	5-K
PS-1005	NEW 40	5-G
PS-1008	NEW 41	5-G
PS-1009	NEW 41	5-H
PS-1010	NEW 41	2-E
PS-1183MT	NEW 40	6-K
PS-1184	NEW 40	5-D
PS-1185	NEW 40	2-C
PS-1186	NEW 40	3-B
PS-1187	NEW 40	1-A
PS-1188	NEW 40	4-A
PS-1436	NEW 40	2-B
PS-1437	NEW 40	5-C
PS-1438	NEW 40	5-E
PS-1439	NEW 40	5-H
PS-1440	NEW 40	5-I
PS-1441	NEW 40	6-B
PS-1442	NEW 41	1-B
PS-1443	NEW 41	1-D
PS-1444	NEW 41	1-F
PS-1446	NEW 41	2-D
PS-1447	NEW 41	2-J
PS-1448	NEW 41	3-A
PS-1450	NEW 41	3-D
PS-1452	NEW 41	4-A
PS-1454	NEW 41	4-D
PS-1455	NEW 41	4-F
PS-1456	NEW 41	4-G
PS-1457	NEW 41	4-I
PS-1459	NEW 41	5-D
PS-1820	NEW 41	5-B
PS-1821	NEW 41	1-I
PS-1822	NEW 41	1-J
PS-1823	NEW 41	4-H
PS-1824	NEW 41	4-J
PS-1825	NEW 41	3-I
PS-1826	NEW 41	3-J

### PT | Abstract

PT-345	NEW 33	1-G
PT-346	NEW 33	5-E
PT-347	NEW 33	5-F
PT-735	NEW 33	3-E

### PWF | Whiteboard

PWF-500	NEW 43	2-A
---------	--------	-----

### RS | Entertainment

RS-1189	NEW 38	1-H
RS-1190	NEW 38	1-G

- For interior applications requiring maximum resistance to fading from UV exposure
- For interior applications requiring maximum resistance to UV fading, not recommended for use on PVC-coated steel panels
- Not recommended for use on compound curved surfaces
- Not recommended for butt joint applications

- Available in E-series
- A product number ending in "H" indicates horizontal grain direction
- Pattern is large scale; view full pattern width image at 3M.com/AMD
- Available in EX Series. See page 43 for visual appearance.

Product Code	Page	Column
RT-1111	NEW 31	5-H
RT-1112	NEW 31	4-G
RT-1827	NEW 31	1-G

### SE | Abstract

SE-567	NEW 33	4-F
SE-568	NEW 33	3-G
SE-570	NEW 33	4-E

### SI | Silk

SI-1232	NEW 26	3-B
SI-1233	NEW 26	2-C
SI-1234	NEW 26	4-B
SI-1235	NEW 26	1-C
SI-1611	NEW 26	4-A
SI-1612	NEW 26	5-A
SI-1613	NEW 26	5-B
SI-1686	NEW 26	3-A
SI-1687	NEW 26	4-C
SI-1688	NEW 26	3-C
SI-1689	NEW 26	1-A

### ST | Stone

ST-442	NEW 32	4-C
ST-736	NEW 32	3-B
ST-737	NEW 32	4-B
ST-1195	NEW 32	4-A
ST-1586	NEW 32	1-C
ST-1587	NEW 32	2-C
ST-1588	NEW 32	3-A
ST-1828	NEW 32	5-A
ST-1829	NEW 32	5-B
ST-1830	NEW 32	3-C
ST-1831	NEW 32	1-A



# Index: Wood Type

Product Code	Page	Column
<b>Alder</b>		
WG-841	21	5-E
<b>Anigre</b>		
FW-231	13	2-C
FW-232	15	1-F
FW-888	13	4-E
FW-889	13	4-G
<b>Ash</b>		
FW-336	9	4-E
FW-337	11	3-D
FW-1258	10	3-C
FW-1259	11	2-D
FW-1293	10	1-F
FW-1294	11	4-D
FW-1296	12	2-C
FW-1297	14	2-D
WG-156	24	4-A
WG-467	19	4-D
WG-947	19	3-G
WG-960	19	2-D
WG-1143	20	1-H
WG-1145H	20	2-H
WG-1343	20	3-A
WG-1344	20	1-B
WG-1345	19	3-D
WG-1346	21	3-B
WG-1347	21	4-B
WG-1348	23	2-B
WG-1349	23	2-C
WG-1350	24	1-A
WG-1351	24	4-C
WG-1352	22	3-A
WG-1353	19	3-H
WG-1354	19	5-H
WG-2839	21	3-A
<b>Beech</b>		
FW-327	13	1-A
FW-616	12	3-A
WG-856	20	1-F
WG-857	21	1-D
<b>Birch</b>		
FW-1211	10	3-B
<b>Birdseye Maple</b>		
WG-763	21	4-F
WG-763GN	22	3-G
FW-1212	12	2-A
FW-1213	11	1-C
<b>Black Limber</b>		
WG-1196	23	3-A
<b>Bombay Blackwood</b>		
WG-1818	24	2-A
<b>Camphor</b>		
FW-7011	12	1-F
<b>Cherry</b>		
FW-234	13	1-B
FW-612	13	4-D
FW-655	13	4-F
FW-1279	10	2-F
FW-1280	13	3-A
FW-1281	13	2-F
FW-1282	16	2-B
FW-1283	13	2-A
WG-364	22	4-C
WG-629	21	2-E
WG-855	22	1-A
WG-865	22	2-B
WG-877	21	1-B

Product Code	Page	Column
WG-878	21	1-E
WG-1057	23	5-B
WG-1058	21	1-G
WG-1142	21	2-G
WG-1360	21	1-H
WG-1361	22	2-A
WG-1362	22	3-C
WG-1363	22	5-B
WG-1364	24	3-A
WG-1375	22	2-C
WG-1377	19	5-B
WG-1815	20	3-G
<b>Chestnut</b>		
FW-1217	9	4-G
FW-1218	14	2-E
FW-1810	10	3-G
<b>Design Wood</b>		
MW-1177	18	2-D
MW-1416	18	1-C
MW-1417	18	2-F
WG-416	21	2-C
WG-417	22	4-D
WG-428	24	3-E
WG-657	19	1-A
WG-658	20	3-B
WG-659	19	5-C
WG-962	22	3-B
<b>Diospyros</b>		
FW-791	12	2-D
<b>Ebony</b>		
FW-643	16	2-D
FW-653	16	1-D
WG-664	24	5-A
WG-1070	24	1-D
WG-1071	19	3-A
WG-7029	23	1-F
MW-776	18	2-E
MW-777	18	3-E
MW-1242	18	2-C
MW-1243	18	3-C
MW-1244	18	4-C
MW-1420	18	4-E
MW-1421	18	4-D
<b>Elm</b>		
FW-1214	10	3-F
FW-1215	11	1-E
FW-1216	17	2-A
FW-1265	12	1-A
FW-1266	11	2-C
FW-7001	9	1-D
WG-1044	24	2-B
WG-1046	19	4-C
<b>Hard Maple</b>		
WG-242	21	3-E
WG-243	20	4-F
<b>Hickory</b>		
WG-1063	24	5-B
WG-1064	23	2-F
<b>Hinoki</b>		
WG-453	20	2-D
WG-845	21	2-B
<b>Japanese Bigleaf Magnolia</b>		
FW-1138	9	1-C
FW-1139H	9	2-C
<b>Japanese Linden</b>		
WG-1812	20	4-D

Product Code	Page	Column
<b>Japanese Nutmeg</b>		
WG-1052	24	5-C
<b>Mahogany</b>		
FW-648	16	3-B
FW-649	15	4-F
FW-677	15	3-C
FW-886	15	1-D
FW-887	15	3-G
FW-1037	16	4-B
FW-1040H	15	4-E
FW-1137	15	3-E
FW-7016	15	3-F
WG-1146	23	4-F
WG-1816	23	5-F
<b>Maple</b>		
FW-334	16	2-F
FW-1261	9	4-F
WG-831	21	4-D
WG-832	20	1-E
WG-833	20	5-C
WG-835	20	2-E
WG-836	22	1-B
WG-837	20	3-E
WG-879	22	1-C
WG-1378	19	1-D
WG-1814	21	5-A
<b>Oak</b>		
FW-236	12	4-A
FW-237	13	3-D
FW-625	16	3-A
FW-627	16	2-G
FW-788	9	3-C
FW-789	10	4-A
FW-1127	17	2-D
FW-1129	10	1-D
FW-1130H	10	2-D
FW-1255	9	3-F
FW-1256	10	2-E
FW-1257	12	1-D
FW-1268	9	3-E
FW-1269	10	2-G
FW-1270	15	2-E
FW-1285	10	4-F
FW-1286	12	4-B
FW-1287	11	4-B
FW-1288	16	3-G
FW-1289	10	3-D
FW-1290	17	4-A
FW-1291	10	2-C
FW-1292	11	1-D
FW-1300	11	4-C
FW-1301	17	1-D
FW-1306	12	1-E
FW-7017	9	4-C
WG-166	19	4-E
WG-256	20	4-G
WG-376	20	4-B
WG-695	23	4-D
WG-696	19	5-F
WG-697	23	4-B
WG-854	21	1-F
WG-943	21	3-F
WG-964	19	2-E
WG-1050	24	2-E
WG-1144	19	3-E
WG-1219	20	4-C
WG-1220	19	2-C
WG-1221	20	1-D
WG-1339	19	4-B
WG-1340	20	2-B
WG-1341	20	2-C
WG-1342	19	5-G
WG-1355	19	1-F

Product Code	Page	Column
WG-1356	20	5-B
WG-1357	19	1-G
WG-1358	21	2-D
WG-1359	21	2-F
WG-2047	24	5-D
WG-2048	23	4-E
WG-2049	20	2-A
WG-215	21	5-C
WG-2944	20	2-G
<b>Olive</b>		
FW-1278	13	1-G
<b>Padauk</b>		
FW-240	15	1-E
FW-619	15	2-F
WG-1147	23	3-H
WG-7024	23	4-G
<b>Parudao</b>		
FW-324	17	4-B
<b>Paulownia</b>		
FW-640	17	3-B
<b>Pear</b>		
WG-410	22	3-D
WG-624	22	4-A
WG-699	21	3-C
WG-946	20	3-D
WG-1381	21	5-B
WG-1382	21	4-E
WG-1383	22	5-A
WG-1384	22	4-B
WG-2244	21	1-C
WG-2246	20	2-F
<b>Pine/Larch</b>		
FW-641	17	3-E
FW-1307	11	3-A
FW-1811	9	2-D
WG-863	21	2-A
<b>Plum</b>		
FW-1036	17	4-E
WG-940	22	2-D
WG-1066	24	3-B
WG-1067	19	4-A
<b>Primavera</b>		
WG-408	24	4-B
WG-693	23	5-G
WG-694	21	5-F
<b>Redwood</b>		
MW-1418	18	4-B
MW-1419	18	3-D
<b>Rosewood</b>		
FW-1135	16	1-E
FW-1136H	16	2-E
FW-7013	15	4-G
FW-7014	16	3-D
WG-159	23	4-H
WG-663	23	2-H
WG-2304	23	1-H
<b>Silver Heart</b>		
WG-250	20	1-G
<b>Slimline</b>		
FW-521	14	4-G
FW-522	17	1-C
<b>Sugi/Cedar</b>		
WG-846	21	4-A

- ★ For interior applications requiring maximum resistance to fading from UV exposure
- ☀ For interior applications requiring maximum resistance to UV fading, not recommended for use on PVC-coated steel panels
- ⚠ Not recommended for use on compound curved surfaces
- W Not recommended for butt joint applications

- NEW New design
- E Available in E-series
  - H A product number ending in "H" indicates horizontal grain direction
  - 📷 Pattern is large scale; view full pattern width image at 3M.com/AMD
  - 🌿 Available in EX Series. See page 43 for visual appearance.

Product Code	Page	Column
<b>Sycamore</b>		
WG-247	19	1-B
WG-248	20	1-C
WG-478	20	3-C
WG-660	19	1-E
WG-709	21	5-D
WG-1380	21	1-A
WG-2056	21	4-C
<b>Teak</b>		
FW-1039H	15	2-C
FW-1124	15	1-C
FW-1125	13	1-E
FW-1271	9	1-E
FW-1272	10	4-G
FW-1273	14	4-A
FW-1302	11	4-A
FW-1805	12	2-E
FW-7007	17	3-A
FW-7015	16	4-A
FW-157	23	5-C
WG-430	23	1-D
WG-1140	23	5-A
WG-1141	20	4-E
WG-1376	24	1-C
WG-7022	22	1-D
WG-7023	23	3-F

Product Code	Page	Column
<b>Tineo</b>		
FW-1274	9	3-G
FW-1275	17	2-B
WG-1336	19	4-G
WG-1337	20	5-H
WG-1338	23	5-H
<b>Walnut</b>		
FW-233	13	2-G
FW-330	16	4-D
FW-332	15	4-C
FW-338	16	1-C
FW-501	13	2-D
FW-502	13	1-F
FW-510	15	3-D
FW-608H	13	3-B
FW-609H	15	4-B
FW-613	14	2-E
FW-614	15	2-D
FW-650	15	4-A
FW-651	16	1-B
FW-795	13	3-C
FW-1020	15	2-G
FW-1021	14	4-E
FW-1022	14	3-D
FW-1023	12	2-B
FW-1113	15	3-A
FW-1121H	14	4-D

Product Code	Page	Column
FW-1122	12	1-B
FW-1123	13	2-B
FW-1207	9	1-G
FW-1208	9	4-D
FW-1209	9	3-D
FW-1210	9	1-F
FW-1276	13	2-E
FW-1277	14	4-C
FW-1331	13	4-C
FW-1801	15	4-D
FW-7006	15	1-G
FW-7008	14	2-F
FW-7009	16	2-C
WG-1365	19	2-A
WG-1366	19	3-C
WG-1367	20	5-G
WG-1368	23	1-A
WG-1369	23	1-B
WG-1370	23	1-C
WG-1371	23	1-G
WG-1372	23	2-D
WG-1373	23	5-E
WG-1374	24	1-B
WG-2019	23	3-G
WG		







3M Commercial Solutions  
3M Center, Building 220-12E-04  
St. Paul, MN 55144-1000

Phone 888-650-3497  
Web 3M.com/DINOC

Ver.1

3M, "3M Science. Applied to Life.", Comply, DI-NOC and Sharpshooter are trademarks of 3M Company.  
All other trademarks are property of their respective owners.  
Please recycle. Printed in Japan. © 3M 2016. All rights reserved.

98-0406-0151-4  
JR-9710-1865-0  
DIN-226-A (041612)IT